

Historic, Archive Document

Do not assume content reflects current scientific knowledge, policies, or practices.



62.67

LIBRARY
RECEIVED
★ APR 29 1941 ★
U. S. Department of Agriculture

1941 SEED CATALOGUE



LEATHERMAN'S, INC.

404 CLEVELAND AVE., N.W.

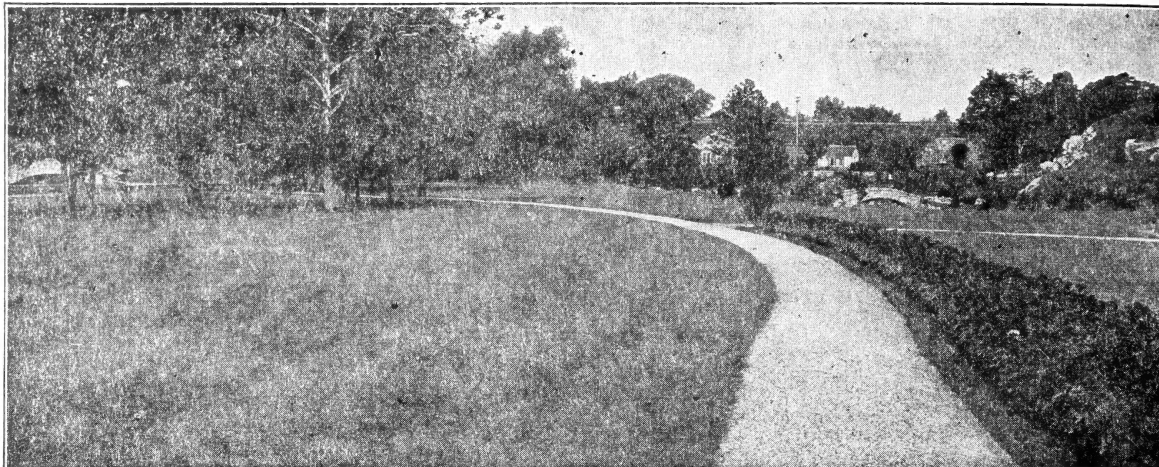
CANTON, OHIO

TELEPHONES 5351 - 5352

LEATHERMAN'S LAWN MIXTURES

IMPROVED EXTRA HEAVY

35 YEARS EXPERIENCE



OUR LAWN FORMULAS ARE SCIENTIFIC

Use Good Pure Seed, 1 to 2 lbs. to 300 square feet or 100 to 150 lbs. to the acre

LEATHERMAN'S MCKINLEY PARK LAWN GRASS SEED

An unequalled mixture for a beautiful lawn for northern Ohio soil conditions. Only fine bladed grasses used to secure permanency and a rich green color. Lb. 50c, 3 lbs. \$1.45, 5 lbs. \$2.35, 10 lbs. \$4.50, 25 lbs. and over 40c per lb.

LEATHERMAN'S VELVETURF LAWN SEED

Contains Creeping Bent. Pure and heavy seed. Lb. 70c, 2 lbs. \$1.35, 5 lbs. \$3.40, 10 lbs. and over, 65c per lb.

LEATHERMAN'S SHADY DELL LAWN SEED

A mixture of grasses combined to produce a perfect sward in densely shaded places. Lb. 65c, 3 lbs. \$1.90, 5 lbs. \$2.75, 10 lbs. \$5.25.

CREEPING BENT GRASS, Astoria, Lb. \$1.

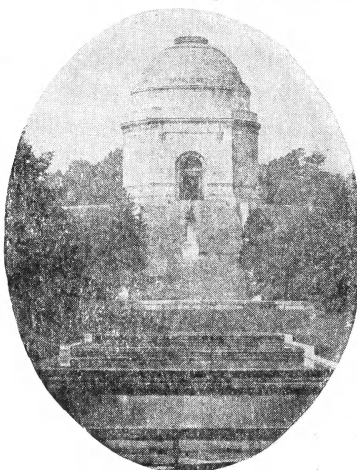
KENTUCKY BLUE GRASS. Best hardy grass for lawns; forms good permanent turf. Lb. 35c.

FANCY RED TOP. Lb. 35c.

WHITE DUTCH CLOVER. ½ lb. 50c, lb. 90c.

EROSIONET

A strong open-mesh fabric made of twisted paper so as to admit sunshine and stop washing of soil on terraces. 45 inches wide. 15c per yard.



McKinley Monument
Canton, Ohio

LEATHERMAN'S VELVET GREEN LAWN GRASS SEED

Our popular priced mixture. Is well balanced and will produce a turf in four to six weeks. Contains no timothy. Lb. 40c, 3 lbs. \$1.15, 5 lbs. \$1.80, 10 lbs. \$3.50, 25 lbs. and over, 30c per lb.

LEATHERMAN'S TERRACE SOD LAWN SEED

A combination of grasses that will make a quick growth and has deep spreading roots. Erosionet should be used on terraces after seeding. Lb. 65c, 3 lbs. \$1.90, 5 lbs. \$3.00, 10 lbs. \$5.75.

MILORGANITE

The Ideal Fertilizer for Lawns for a summer application. Will not burn the grass. 25 lbs. \$1.00, 50 lbs. \$1.75, 100 lbs. \$2.75.

for better flowers

VIGORO

Complete plant food

A complete scientifically prepared plant food for lawn, garden and greenhouse. Apply in early spring on lawns for best results. 100 lbs. \$4.00, 50 lbs. \$2.50, 25 lbs. \$1.50, 10 lbs. 85c, 5 lbs. 45c.

LIME AND FERTILIZER SPREADERS

"Handy" with 16 inch spread \$3.45

"Buddy" with 22 inch spread \$6.95

All Prices f. o. b. Canton, Ohio and subject to market changes.

Letherman's

PRICE LIST of

(Asgrow) Vegetable Seed

Including our Specialties and such items of the "All America Selections" best suited for the territory we serve.

Letherman's Famous Lawn Grass Mixtures, and a list of Flower Seeds of UNSURPASSED quality with many of the "All America Selections."

NON-WARRANTY. Letherman's Inc. gives no warranty, express or implied, as to description, quality, productiveness, or any other matter of any seeds, bulbs, plants, or roots it sends out, and will not be responsible for the crop.

QUOTATIONS in this catalog are f. o. b. Canton, Ohio, unless otherwise stated. All prices are subject to change without notice. We guarantee safe delivery to all freight or express stations.

ASPARAGUS		Pkt.	oz.	¼ lb.	lb.
Mary Washington. Rust resistant, early, tender, deep green color.		.10	.15		.30
Mary Washington Roots. Doz. 40c, 50-\$1.35, 100-\$2.25 postpaid.					
BEANS, DWARF WAX PODDED		Pkt.	½ lb.	lb.	2 lbs.
Letherman's Supreme Wax. 50 days. Pods flat, slightly oval, stringless.		.10	.20	.35	.60
Pencil Pod Black Wax. 55 days. Pods round, slightly curved, stringless.		.10	.20	.35	.60
Sure Crop Wax. 53 days. Semi-flat pods 6 to 7 inches long and ½ inch wide. Plants and pods disease-resistant.		.10	.20	.35	.60
Improved Golden Wax. 51 days. Plant disease-resistant, productive. Pods broad, flat, and stringless.		.10	.20	.35	.60
Round Pod Kidney Wax. (Brittle Wax). 58 days. Pods round, slightly curved, and stringless.		.10	.20	.35	.60
BEANS, DWARF GREEN PODDED					
Tendergreen. (Asgrow Stringless Green Pod - Gold Medal 1933). 50 days. Pods long, nearly straight, round, fleshy, and stringless.		.10	.20	.35	.60
Asgrow Stringless Black Valentine. Award of Merit 1933. 49 days. Pods oval round, nearly straight, fine flavor, entirely stringless.		.10	.20	.35	.60
Bountiful. 49 days. Pods light green, flat, tender, and stringless.		.10	.20	.35	.60
Burpee's Stringless. 50 days. Round pods, meaty, and stringless.		.10	.20	.35	.60
Giant Stringless. 53 days. Light green pods, round and long.		.10	.20	.35	.60
Full Measure. 53 days. Pods round, straight, and stringless.		.10	.20	.35	.60
Red Valentine. 52 days. Productive plant, round fleshy pods.		.10	.20	.35	.60
Dwarf Horticultural. 54 days. Used both for snap and green shell purposes. Pods long, semi-round, very thick, and stringless.		.10	.20	.35	.60
BEANS, POLE GREEN POD					
Kentucky Wonder or Old Homestead. 65 days. Very productive. Pods are 7½ to 8 inches long, thick, meaty, fiberless and brittle.		.10	.20	.35	.60
Lazy Wife. 74 days. Very productive with thick, stringless pods. Used as a snap, green shell, and dried winter bean.		.10	.20	.35	.60
London Horticultural or Cranberry. (Wren's Egg) 70 days. Widely used as a snap and green shell bean. Flat, thick, stringless pods.		.10	.20	.35	.60
Old Fashioned Striped Sickle. 70 days. Long, stringless pods.		.10	.20	.35	.60
Mammoth Horticultural, King or Worcester. Largest podded and largest seeded of horticultural beans. Pods large, heavily splashed with red.		.10	.20	.35	.60

BEANS, POLE WAX POD	Pkt.	½ lb.	lb.	2 lbs.
Kentucky Wonder Wax. 68 days. Plants productive. Long tender pods.	.10	.20	.35	.60

SHELL BEANS

Michelite Navy Beans. Resistant to mosaic and bacterial wilt or blight, a vigorous producer and improvement over Robust in quality.	.10	.15	.25	.45
Large White Marrowfat.	.10	.15	.25	.45
White Kidney.	.10	.15	.25	.45
Red Kidney.	.10	.15	.25	.45

POLE LIMA BEANS

Early Leviathan. 79 days. Earliest of large podded pole Limas and very productive. Large, straight pods containing 5 to 6 large beans.	.10	.20	.35	.60
Giant Podded. 90 days. Largest podded of all Limas. Pods 7½ to 8 inches long by 1½ inches broad.	.10	.20	.35	.60
King of the Garden. 88 days. Very productive, with 4 to 5 beans to pod.	.10	.20	.35	.60
Florida Butter. 78 days. Beans size of small Lima, popular in South.	.10	.20	.35	.60
White Dutch Runner or Butter Beans. 65 days. Early, very prolific, with distinct delicious flavor. Pods have 4 to 5 medium size beans.	.10	.20	.35	.60

BUSH LIMA BEANS

Fordhook. 75 days. Plants bear clusters of pods, each with 3 to 5 large, thick, beans of rich flavor and high food value.	.10	.25	.40	.70
Burpee's Improved Bush. 75 days. A few days earlier than Burpee's, larger and more prolific. Clusters of 5 or 6 pods with 4 beans each.	.10	.20	.35	.60
Burpee's Bush. 77 days. Large seeded variety with 3 to 4 beans to pod.	.10	.20	.35	.60
Henderson's Bush. (Baby Lima). 65 days. Plants small, very prolific. Pods flat with 3 to 4 small flat beans of fine flavor.	.10	.20	.35	.60

EDIBLE SOY BEANS

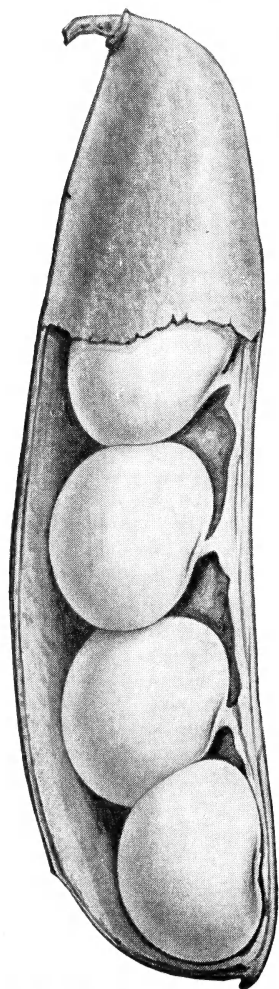
Bansei. 90 days. Plants erect and of medium height, very prolific, well adapted for short season areas. Beans glossy yellow, of mild flavor.	.10	.25	.40	.75
Hokkaido. 98 days. Plant erect and of medium height. Pods large, gray. Beans large, yellowish, of nut-like flavor. Fine midseason variety.	.10	.25	.40	.75

BEETS

	Pkt.	Oz.	¼ lb.
"Holco" Green Top Blood. Leaves are bright green. Root is top-shaped, deep blood red without fibre or stringiness. It is sweet and tender at all stages of growth, retaining these fine qualities when stored.	.10	.15	.50
Detroit Dark Red. Tops are small, dark green tinged with red. Uniform, globular-shaped roots, with deep red flesh.	.10	.15	.35
Perfected Detroit. (Award of Merit 1934). A perfected strain of Detroit Dark Red. Smooth, globe shaped, deep crimson roots. Matures early.	.10	.15	.35
Ohio Canner. A beet particularly suitable for canning. Roots globe shape with rich deep solid red flesh.	.10	.15	.35

Ford Hook — Bush Lima

Asgrow Wonder. Extra early, deepest red all through, semi-flat with rounded bottom, fine flavor and quality. Tops suitable for bunching.	.10	.15	.30
Crosby's Egyptian. Tops bunch well, roots dark red, turnip shape.	.10	.15	.30



MANGEL WURZEL AND SUGAR BEET			
	Pkt.	oz.	¼ lb. lb.
Mammoth Long Red. Heaviest cropping and largest of all Mangels.	.05	.10	.25 .65
Golden Tankard. Smooth yellow fleshed variety. Heavy, firm, solid.	.05	.10	.25 .65
Danish Sludstrup. A good cropper of high feeding value.	.05	.10	.25 .65
Giant Half Sugar. Very productive. White roots with rose colored shoulder.	.05	.10	.25 .65
BROCCOLI			
	Pkt.	½ oz.	oz.
Italian Green Sprouting. A fine early strain which branches freely.	.10	.35	.75
BRUSSELS SPROUTS			
Half Dwarf Improved. Fine half dwarf variety with large solid dark green sprouts of excellent quality.	.10	.40	.75
CABBAGE, EARLY VARIETIES			
Golden Acre. An extra early selection of Copenhagen Market Type. Heads are round, solid, and very uniform.	.10	.30	.50
Copenhagen Market. An excellent round head early variety for shipping or kraut. Few outer leaves, short stem.	.10	.30	.50
Marion Market. (Yellows-resistant Copenhagen). Recommended for disease infected soil. Similar to Copenhagen but with slightly larger heads.	.10	.30	.50
Early Jersey Wakefield. Very early, small and compact cone shaped heads.	.10	.15	.25
Charleston Wakefield. Cone shaped heads larger than Jersey Wakefield and about a week later.	.10	.15	.25
CABBAGE, SECOND EARLY VARIETIES			
Wisconsin Allseasons. (Yellows-resistant). Heads large, solid and excellent quality. Chiefly used for kraut, also a good winter keeper.	.10	.25	.40
Glory of Enkhuizen. Large, round, solid heads of excellent quality.	.10	.25	.40
All Head Early. Heads flat, slightly rounded top.	.10	.15	.25
CABBAGE, LATE VARIETIES			
Wisconsin Hollander No. 8. (Yellows-resistant). Heavy yielding late type selected from Danish Ballhead. Heads solid, round, slightly flattened.	.10	.30	.50
Danish Ballhead. (Tall Stem). High yielding variety with round heads of uniform size and shape. Heads are solid and keep well.	.10	.25	.45
Danish Roundhead. (Short Stem). This variety has all the excellent qualities of the tall stem, but has less outer leaves.	.10	.25	.45
Penn State Ballhead. Fine winter keeper. Heads of uniform size and shape, largely resistant to Blackleg.	.10	.30	.60
Sure Head. An excellent late cabbage of the Flat Dutch type.	.10	.20	.30
Premium Late Flat Dutch. Heavy yielding variety and fine keeper. Heads are large, flat, and solid.	.05	.20	.30
American Drumhead Savoy. Crinkled dark leaves, solid round heads.	.10	.25	.40
Mammoth Red Rock. Large, round, solid heads of purple-red color.	.10	.25	.40
CHINESE CABBAGE			
Chihili. Tall early variety, tapered at tip, solid, sweet and tender.	.10	.20	.30
Pe Tsai. Slightly smaller than Chihili. Very crisp and sweet.	.10	.20	.30
Wong Bok. Stalks are shorter and thicker than Pe Tsai.	.10	.20	.30
CAULIFLOWER			
"Holco" Earliest. Earliest, most uniform heading Cauliflower grown. Heads unusually large, solid and heavy. Largely disease resistant.		Pkt.	¼ oz.
		.25	1.50
Early Snowball. Popular dwarf variety with solid, pure white heads.		.25	1.50
Dry Weather. About a week later than Snowball with heads much larger.		.25	1.50
CANTALOUPE and MUSKMELLON			
	Pkt.	oz.	¼ lb.
Honey Rock (Sugar Rock). Fruits are nearly round, heavily netted without ribs. Flesh is thick, of deep orange color, and fine flavor.	.10	.15	.35
Imperial. Of Rocky Ford size, with beautiful orange flesh of excellent flavor. The small and deep netting enables it to stand shipping well.	.10	.15	.35
Improved Perfecto. Nearly round pink meat melon, small seed cavity.	.10	.15	.35
Golden Champlain. Very early, medium size, thick, golden yellow flesh.	.10	.15	.35

CANTALOUPE and MUSKMELLON (Continued)		Pkt.	oz.	¼ lb.
Hearts of Gold. Medium size, nearly round, deep orange flesh.		.10	.15	.35
Tip Top. Large, oval fruits with sweet, bright salmon flesh.		.10	.15	.35
Pride of Wisconsin. Fruits oval, rind pearly gray, thick orange flesh.		.10	.15	.40
Hale's Best No. 36. Fruits are uniform in shape with thick, deep salmon colored flesh. A very early variety, fine for shipping and market.		.10	.15	.40
Hale's Best No. 45. (Mildew Resistant). Very early melon, oblong in shape with deep salmon flesh. Slightly smaller than No. 36.		.10	.15	.40
Bender's Surprise. Medium early, fruits oval with deep orange flesh.		.10	.15	.40
Honey Dew. Hard, smooth, round, cream colored rind. A large variety with thick, emerald green flesh of distinctive flavor.		.10	.15	.35

CARROT

Letherman's Market Pride. Roots smooth, about 6 inches long, stump rooted, with deep orange color and fine flavor. Tops suitable for bunching.		.10	.20	.60
Supreme Half Long. Roots smooth, fine color outside and interior small red core. Tops are small.		.10	.20	.60
Imperator (Award of Merit 1933). Tops are suitable for bunching. Roots are 7 to 8 inches long, taper to semi-blunt end, rich orange, sweet and tender.		.10	.25	.75
Chantenay Improved. Thick and stump-rooted, 5½ inches long, deep orange with excellent flavor. Popular all-purpose variety.		.10	.20	.60
Red Cored Chantenay. Flesh and core reddish-orange, tender and sweet.		.10	.20	.60
Nantes Improved Coreless. Flesh reddish-orange, practically coreless.		.10	.25	.75
Danvers Half Long. 7 to 7½ inches long, flesh bright orange, crisp.		.10	.20	.60
Oxheart or Guerande. Roots heart-shaped, thick and blunt end.		.10	.20	.60
Long Orange Improved. For garden use and stock feeding. Heavy cropper.		.10	.20	.60

COLLARD

Georgia Southern. Thrifty and vigorous.		.05	.15	.30
--	--	-----	-----	-----

CRESS

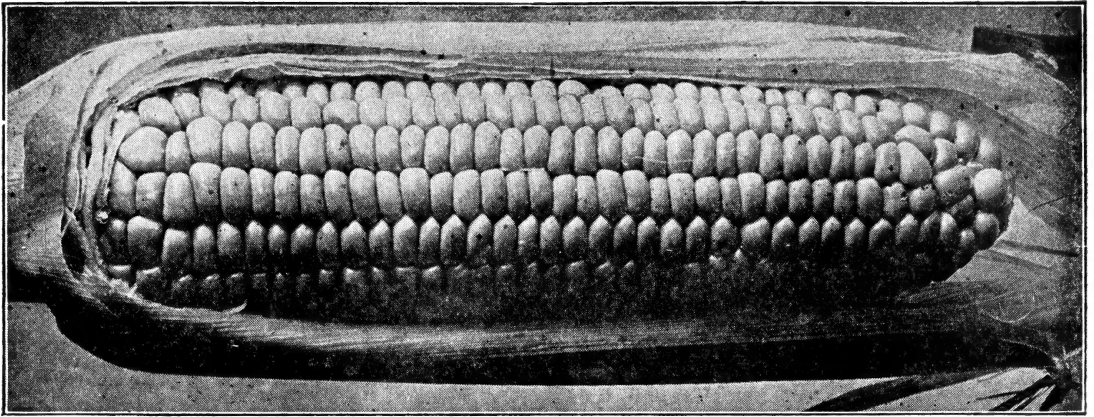
Curled Cress or Pepper Cress. Used for salad and garnishing. Sow thinly in rows, a foot apart, cover lightly.		.10	.15	.50
Water Cress. Should be sown in damp soil or stream of water.		.10	.35	.60

SWEET CORN, HYBRIDS

	Pkt.	½ lb.	lb.	2 lbs.
Marcross C6 x 13. 72 days. Stalks short, sturdy, resistant to Stewart's disease. Ears long, 10-14 rowed, light cream-yellow kernels.	.15	.25	.40	.70
Golden Cross Bantam. 85 days. Very prolific variety with sturdy stalks highly resistant to Stewart's disease. Ears 10-14 rowed, bright yellow.	.15	.25	.40	.70
Stowell's Evergreen Hybrid 14 x 5. 93 days. Large, uniform white ears 9 to 10 inches long, 16-18 rowed. Kernels deep, medium-wide.	.15	.25	.40	.70

SWEET CORN, OPEN-POLLINATED WHITE

Letherman's Leader. 70 days. An extremely early white corn of superior quality. Ears 8 inches long, filled with plump sweet kernels.	.10	.15	.30	.45
Whipple's Early White. 85 days. Ears 7 to 8 inches long with 14 to 16 rows of deep medium narrow kernels well filled at tips.	.10	.15	.30	.45
Howling Mob. 83 days. Prolific variety, ears 12-14 rowed.	.10	.15	.30	.45
Stowell's Evergreen. 95 days. Well known late variety. Ears 8 inches long with 16-20 rows of deep white kernels, very sweet and tender.	.10	.15	.30	.45
Early Evergreen. 90 days. Resembles Stowell's Evergreen, but is about 5 days earlier. Ears 16-20 rowed, kernels deep, white, and sweet.	.10	.15	.30	.45
Country Gentleman or Shoe Peg. 95 days. A very prolific late variety, stalks often bearing two ears, which are of medium size with deep grains set irregularly on a small cob. Kernels very deep and sweet.	.10	.15	.30	.45
Black Mexican. 88 days. Ripe grain is bluish black, but cooks very white. Ears 8 rowed, kernels exceptionally sweet.	.10	.15	.30	.45



Golden Cross Bantam

	Pkt.	½ lb.	lb.	2 lbs.
SWEET CORN, OPEN-POLLINATED YELLOW				
Golden Colonel. 93 days. A cross between Country Gentleman and Golden Bantam. Kernels are very deep, narrow, and are arranged irregularly.	.10	.15	.30	.45
Golden Sunshine. 74 days. Earlier than Golden Bantam. Ears are longer with 10 to 12 rows of medium broad golden yellow kernels.	.10	.15	.30	.45
Golden Bantam. 79 days. Best known of the yellow varieties. Ears are about 6 inches long with 8 rows of tender, golden yellow kernels of the finest flavor.	.10	.15	.30	.45
Improved Golden Bantam 10-14 Rowed.. 82 days. More productive than Golden Bantam. Ears larger and kernels remain tender a few days longer.	.10	.15	.30	.45
Bantam Evergreen (Golden Evergreen). 95 days. Evergreen type of ear, 8 inches long with 14-18 rows of golden yellow kernels.	.10	.15	.30	.45
Barden's Wonder Bantam. 82 days. Has all the good qualities of Golden Bantam, but has ears 8 to 10 inches long with 8 rows of golden kernels.	.10	.15	.30	.45
Whipple's Early Yellow. 87 days. Medium size ears, 12-14 rowed, well filled at tips. Sweet golden yellow kernels. Strong husks.	.10	.15	.30	.45
POP CORN				
T. N. T. Dynamite or Giant Yellow. 100 days. Large ears with kernels that pop to enormous size which are tender and fine flavored.	.10	.20	.30	.45
White Rice. 90 days. Very productive, excellent quality.	.10	.20	.30	.45
Golden Queen. 90 days. Large ears, pops creamy white.	.10	.20	.30	.45
Japanese Hulless. 85 days. A dwarf white variety. Popped grains are large, tender, and have no hull.	.10	.20	.30	.45
CELERY				
Crispheart (Fusarium Yellows-resistant). An early green celery with broad thick stems, very easy to blanch.	.10	.30	.55	.85
Columbia. Very desirable second early variety. Medium height, very stocky and heavy. Stalks thick, almost round of excellent quality.	.10	.15	.25	.40
Giant Pascal. Special strain. A fine late variety with broad, thick, solid stalks of nutty flavor. A good winter keeper.	.10	.20	.30	.50
Golden Plume or Wonderful. Very early with a rich nutty flavor. Marked resistance to blight and rust.	.10	.30	.55	.85
Golden Self-Blanching (Tall or New Strain). Retains all the good qualities of the old strain, and in addition has longer, firmer stems.	.10	.25	.40	.70
"Holco" Emperor. Stalks about 16 inches in height with dark green foliage. Blanches to pure yellow at heart. Unusually thick stalks, tender and nutty flavor. Easy to blanch and a good winter keeper.	.10	.20	.30	.50
Utah or Golden Crisp. Excellent green variety for fall use, maturing a week earlier than Giant Pascal. Stems broad, thick and well rounded.	.10	.30	.55	.85
CELERIAC				
Giant Smooth Prague. Produces large roots nearly globe shape.	.10	.15	.25	



Letherman's Wondergreen

	Pkt.	oz.	¼ lb.
CUCUMBER			
Letherman's Wondergreen. 68 days. Uniform in shape, size, and deep green color, 10 to 11 inches long. Crisp, solid flesh desirable for slicing.	.10	.20	.45
Straight Eight. 66 days. Deep, green straight fruits about 8 inches long with well rounded ends. Very productive, fine for slicing.	.10	.20	.50
Colorado. 68 days. An early, prolific, long slender white spine variety. Flesh is tender, crisp, and fine flavor. Color is dark green.	.10	.20	.45
Clark's Special. 63 days. A fine dark green white spine variety good for all purposes. Holds its color and firmness in distance shipping.	.10	.20	.45
Longfellow. 70 days. A long variety for forcing or outdoor culture.	.10	.20	.55
A. & C. Special. 68 days. A desirable market cucumber because of its uniform length (10 to 12 inches), deep green color, and fine slicing texture.	.10	.20	.40
Holco White Spine. 62 days. Early, very productive variety. Perfect shape, rich dark green fruits 7 to 8 inches long.	.10	.15	.40
Early Fortune. 64 days. Fruits uniform, 9 inches long, slightly tapering at both ends. Excellent for shipping or for the home garden.	.10	.15	.25
Davis Perfect. 65 days. Fruits dark green, flesh tender and fine flavor.	.10	.15	.30
Extra Long or Evergreen (White Spine). Similar to Davis Perfect. Slightly longer and thicker.	.10	.15	.40
White Wonder. Fruits about 7 inches long, white at all stages of growth.	.10	.20	.50
Improved Long Green. 67 days. Fruits long, slender, dark green, very crisp and tender. Excellent for pickles when gathered young.	.10	.15	.35
Boston Pickle. 58 days. Very early. Fruits are smooth and taper slightly.	.10	.15	.30
Chicago Pickle. 59 days. Disease resistant, early, fruits have blunt ends.	.10	.15	.30
Early Frame or Short Green. Very hardy and fine for a second crop of pickles.	.10	.15	.30
Early Cluster. 55 days. Early, smooth, heavy yielding pickling variety.	.10	.15	.30
West India Gherkin. 60 days. Used for pickles. Light green fruits are small, oval, about 1½ inches long and covered with spines all over.	.10	.15	.30
Japanese Climbing. Used for training over trellises. Fruits about 9 inches long.	.10	.15	.30
DANDELION			
Improved Thick Leaved. Compact growth, deep green leaves.	.10	.25	.45
DILL			
Long Island Mammoth. For flavoring cucumber pickles and vinegar.	.05	.10	.25
EGG PLANT			
Black Beauty. 80 days. Very prolific, earlier than New York Improved.	.10	.25	.40
New York Improved Purple. 83 days. Fine, rich purple fruits, larger than Black Beauty, are produced until frost.	.10	.25	.40

ENDIVE		Pkt.	oz.	¼ lb.
White Curled. 100 days. Small variety. Leaves finely curled with broad ribs slightly tinged rose. Creamy white at heart, fine flavor.		.10	.15	.55
Green Curled. 95 days. Leaves are finely cut, midrib is white. Full center blanches readily to white. A fine variety for fall and winter use.		.10	.15	.55
Batavian Full Hearted. 90 days. Inside leaves form a rather solid head which blanches creamy white. Crisp, deep green leaves with thick midribs.		.10	.15	.55
HORSE RADISH ROOTS. (Ready in March).				
Maliner Kren. Vigorous grower; large roots of superior quality. Doz. 25c. Write for prices on larger quantities.				
KALE or BORECOLE		Pkt.	oz.	¼ lb.
Dwarf Curled Scotch. 55 days. Largely grown for "greens" during fall and winter. Leaves are rich, bright green color.		.10	.15	.30
Dwarf Siberian. 65 days. This sort will stand very cold weather. Leaves are broad, blue-green, finely curled.		.10	.15	.30
KOHLRABI		Pkt.	½ oz.	oz.
Early White Vienna. 55 days. Early dwarf sort. Bulbs globe shape, very light green, flesh very tender and clear white.		.10	.20	.35
Early Purple Vienna. 62 days. Outside color is purple, flesh white.		.10	.20	.35
LEEK				
American Flag. A strong growing variety, large, thick stems of mild flavor.		.10	.25	.40
LETTUCE		Pkt.	oz.	¼ lb.
Imperial No. 847. 84 days. Blight and tip-burn resistant variety of the Iceberg type. Heads medium large, firm, well covered by inner leaves.		.10	.25	.70
Big Boston. 75 days. Heads medium size, light green, tinged brown on the edges, solid, with buttery yellow heart.		.10	.15	.45
Special White Boston. 76 days. Similar to Big Boston, but with lighter green leaves without the brown tinge.		.10	.15	.45
New York No. 12. 77 days. A fine strain of New York with large, solid heads of light green color, early in maturing.		.10	.25	.70
Crisp as Ice. 74 days. Leaves dark green tinged with brown. Heads are large, solid, and crisp with creamy yellow heart.		.10	.25	.70
Improved Hanson. A sure header. Heads large, light green, tender.		.10	.15	.35
Iceberg. 84 days. Medium green leaves with fringed edges tinged with brown. Forms a large, compact head, beautifully white inside.		.10	.15	.45
Paris White Cos. 66 days. About 8 inches tall, medium green, solid heads.		.10	.15	.35
Early Curled Simpson. 45 days. Curled non-heading variety. Leaves medium large, light green, crumpled, tender and sweet.		.10	.15	.35
Black Seeded Simpson. 46 days. A standard non-heading variety of large size; light yellowish green, early and of fine quality.		.10	.15	.35
Grand Rapids. 43 days. Plants make a compact bunch of light green leaves with much frilled edges. Early, hardy, and disease resistant.		.10	.15	.45
Grand Rapids (Tip-Burn Resistant). Is a few days earlier and makes a heavier plant than the regular strain.		.10	.25	.70
Ohio Grand Rapids. 43 days. Darker green than Grand Rapids; especially good for forcing.		.10	.15	.45
Prize Head. 47 days. Non-heading variety. Leaves curly, tinged red.		.10	.15	.35
Chicken Lettuce. A tall growing, dark green, hardy non-heading type, producing a large supply of leaves. Excellent green food for poultry and rabbits.		.10	.15	.35
MUSTARD		Pkt.	oz.	¼ lb.
Fordhook Fancy or Ostrich Plume. Dark green leaves, finely curled.		.10	.15	.25
Southern Giant Curled. Large; light green leaves, curled at edges.		.10	.15	.25
OKRA or Gumbo				
Perkins Mammoth. 56 days. Prolific sort with long, deep green pods.		.10	.15	.25
White Velvet. 60 days. Long, slender, white pods.		.10	.15	.25

ONION	Pkt.	½ oz.	oz.	¼ lb.
Genuine Bottle Onion. A bottle shaped onion with sweet and mild flavor. Its great length makes it a fine variety for bunching. It is splendid for slicing, and is a good yielder and keeper .	.15	.35	.60	1.90
Southport Yellow Globe (Brigham Strain). 109 days. A hardy late sort and an excellent keeper. Globe-shaped, and of mild flavor.	.10	.35	.60	1.90
Southport Yellow Globe. 115 days. Nearly round, medium size, tough skins.	.15	.35	.60	1.90
Southport White Globe. 110 days. Best of the white varieties. Bulbs round, pure white, of medium size. Flesh is waxy white, of mild flavor.	.15	.35	.60	1.90
Southport Red Globe. 110 days. Good size bulbs, purplish red skin. Flesh is white, tinged with pink, of strong flavor. Excellent keeper.	.10	.30	.55	1.80
Riverside Sweet Spanish. 110 days. Large, globe-shaped onion with yellow skin and white flesh. Very excellent mild flavor and a good keeper.	.10	.35	.60	1.90
Ebenezer or Japanese. 100 days. Very early and prolific. Bulbs are of medium size, deep, flat, of mild flavor. Flesh is white.	.10	.35	.60	1.90
White Ebenezer. A fine large white onion of the Ebenezer type, is an excellent keeper and is quite resistant to smut.	.10	.35	.60	1.90
Early Yellow Globe. 98 days. Productive and good keeper. Bulbs medium size.	.10	.35	.60	1.90
Yellow Globe Danvers. 112 days. Medium size, medium early, mild flavor.	.10	.35	.60	1.90
White Portugal or Silverskin. 100 days. Bulbs medium size, flat, pure white. Ripens late. Used for sets, pickling, and green bunching.	.10	.35	.60	1.90
Ohio Yellow Globe. 110 days. Bulbs medium large, globe shape, good keeper.	.10	.35	.60	1.90

ONION SETS

Genuine Bottle, lb. 40c. White Silverskin, lb. 35c. Ebenezer or Japanese, lb. 30c. Yellow, lb. 30c. Postpaid. (Write for prices on larger quantities).

ONION PLANTS

Bermuda. Produces a mild sweet onion. Ready May 1st. Per 100, 30c postpaid.

PARSLEY

	Pkt.	oz.	¼ lb.
Paramount. Dark green color, growth compact, leaves extra triple and finely curled.	.10	.15	.40
Champion Moss Curled. Bright green leaves, densely curled.	.10	.15	.35
Plain. Leaves bright green, not curled.	.05	.15	.25
Hamburg Turnip-Rooted. Foliage like common parsley, roots long, edible.	.10	.15	.35

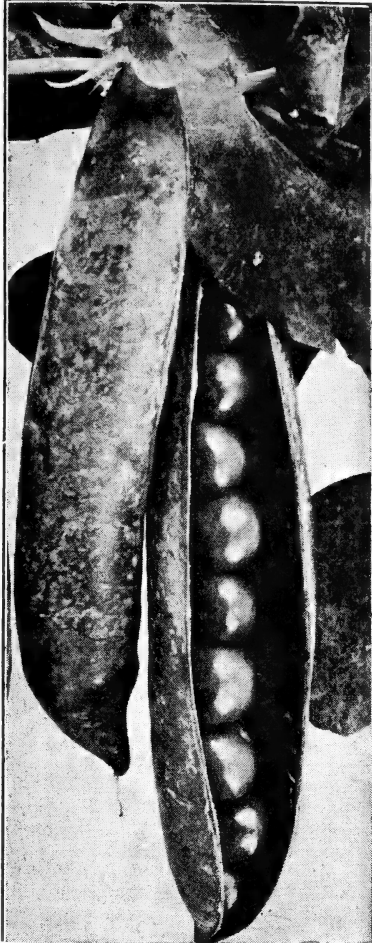
PARSNIP

Improved Hollow Crown. Medium long root with broad shoulder. Flesh is smooth, white, tender and sweet.	.05	.15	.35
---	-----	-----	-----

PARCEL POST RATES WITHIN U. S. and Possessions From Canton, Ohio

	FIRST POUND OR FRACTION	TWO POUNDS OR FRACTION	EACH ADDITIONAL POUND OR FRACTION
First Zone within 50 Miles of Canton	8c	10c	1c
Second Zone within 50 to 100 miles of Canton.....	8c	10c	1c
Third Zone within 150 to 300 Miles of Canton.....	9c	11c	2c
Fourth Zone within 300 to 600 Miles of Canton.....	10c	14c	3c
Fifth Zone within 600 to 1000 Miles of Canton.....	11c	17c	5c
Sixth Zone within 1000 to 1400 Miles of Canton	12c	19c	7c

Weight Limit. The weight limit within the first, second and third zones is 70 pounds, with in all other zones 50 pounds. If in doubt, get the zone rate from your Postmaster. Shipments of 20 pounds or over beyond the third zone are cheaper if sent by Express. Express and Freight rates are cheaper in large quantities. We make no charge for delivery to freight depot or express office in Canton.



Early Bird Peas

PEAS

Pkt. ½ lb. lb. 2 lbs.

Alaska. 57 days. Very early, smooth seeded variety. Pods 2½ inches, well filled, and very productive. Vines 20 to 30 inches.	.10	.20	.30	.55
Early Bird. 55 days. Extremely early large, deep green pods 4 to 4½ inches long filled with 9 to 10 large dark green peas of fine quality.	.10	.20	.35	.60
Hundredfold. 64 days. Large, deep green, well filled pods. Productive.	.10	.20	.35	.60
Thomas Laxton or Improved Dark Podded. 62 days. A good medium early variety with blunt, broad, well filled pods.	.10	.20	.35	.60
Gradus (Improved). 65 days. Large, medium green pods with 7 to 9 peas.	.10	.20	.35	.60
Laxton's Progress. 62 days. Largest podded of the Laxtonian type. Pods broad, slightly curved, dark green with 7 to 9 dark green peas.	.10	.20	.35	.60
Little Marvel. 64 days. Blunt, plump, dark green pods about 3 inches long, well filled with tender, sweet peas. Very prolific.	.10	.20	.35	.60
Laxtonian. 63 days. Pods dark green, about 7½ inches long, well-filled.	.10	.20	.35	.60
American Wonder. 61 days. Pods about 2½ inches long, well-filled.	.10	.20	.35	.60
Nott's Excelsior. 62 days. Resembles American Wonder, but is taller.	.10	.20	.35	.60
Premium Gem. 64 days. A very prolific variety. Pods about 3 inches long, straight, blunt ended with 6 or 7 peas. Vines are dwarf.	.10	.20	.35	.60
Telephone. 74 days. Tall vines with dark green pods, 4½ to 5 inches long, filled with 8 to 10 large peas of fine quality.	.10	.20	.35	.60

Dwarf Telephone or Daisy. 76 days. Vines and pods light green. Pods 4½ inches long and well filled. Very productive.	.10	.20	.35	.60
Potlatch. 79 days. Large deep green pods, very prolific.	.10	.20	.35	.60

PEAS, EDIBLE-PODDED

Dwarf Grey Sugar. 65 days. Dwarf variety, pods broad and flat.	.10	.20	.35	.60
Mammoth Melting Sugar. 74 days. Vines are tall, pods very broad, brittle and fleshy. Seeds white.	.10	.20	.35	.60
Mammoth Luscious Sugar. 74 days. Vines are tall. Largest and most productive of edible podded varieties. Pods broad, about 5 inches long.	.10	.20	.35	.60
BLACK EYE PEAS. May be used as "snaps" or as dry or shelled peas. Vines are tall and prolific bearers.	.10	.20	.35	.60

PEANUTS

Improved Virginia Jumbo. A very large, prolific, and easily grown variety.	.20	.35	.60
Improved Spanish. Not so large as other varieties, but of fine flavor.	.20	.35	.60

PEPPER

	Pkt.	½ oz.	oz.
Windsor—A. Very early Ruby King type. Very thick fleshed, sweet.	.10	.25	.45
Rocky Ford. Prolific bearer of rather large, thick-walled fruits.	.10	.25	.45
California Wonder. 75 days. A very large midseason variety. Fruit is 4 lobed, flesh is thick, firm, and sweet.	.10	.30	.50
Florida Giant. A fine large variety, thick flesh of fine flavor.	.10	.30	.50
Chinese Giant. 80 days. Large, sweet, square-ended variety.	.10	.25	.45
Long Red Cayenne. 70 days. A long, thin, hot variety.	.10	.25	.45

PEPPER (Continued)		Pkt.	½ oz.	oz.
Ruby King. 68 days. Fruits tapering with thick, sweet flesh.		.10	.25	.45
Pimiento. 73 days. Fruits are heart-shaped, very smooth, color glossy green changing to ruby red. Flesh very thick, sweet and mild.		.10	.25	.45
Hungarian Wax. 65 days. A hot variety. Fruit 5 to 6 inches long, usually curved and twisted. Waxy yellow changing to crimson at maturity. Generally used at the yellow stage of growth.		.10	.25	.45
Short Hungarian Wax. 65 days. A shorter, thicker type of Hungarian not so hot as the long variety.		.10	.25	.45
Oshkosh. 70 days. Smooth heart-shaped, deep golden yellow when ripe. Flesh thick and of distinctive flavor.		.10	.25	.45
Golden Queen. 78 days. Resembles Ruby King in shape and size, but color is attractive yellow. Flesh mild and sweet.		.10	.25	.45
PUMPKIN		Pkt.	oz.	¼ lb.
Mammoth Golden Cushaw. Crook-necked. Skin is golden yellow. Flesh is yellow, dry, and sweet. Very productive.		.05	.10	.25
King of the Mammoth or Pot Iron. The largest of all Pumpkins. Fruits round, light yellow mottled with orange.		.05	.15	.35
Orange Winter Luxury. An early, prolific variety. Fruits small, round, slightly flattened, deep orange color. Flesh is thick, firm and sweet.		.05	.15	.25
Japanese Pie. Crook-necked. Skin is dark green with lighter green markings. Weighs 10 to 12 pounds. Fine for pie or stock feeding.		.05	.15	.25
Small Sugar. Small size, an excellent keeper. Fruits deep orange, flattened, slightly ribbed. Flesh very sweet and tender.		.05	.15	.25
Green Striped Cushaw. Crook-necked. Rind creamy white with irregular green stripes. Flesh yellow and thick. Used for stock feed.		.05	.15	.25
Connecticut Field. Standard cornfield variety. Large, round, orange color, hard rind. Flesh thick and sweet. Used for pies and stock feed.		.05	.10	.20

RADISH

Cavalier. 23 days. Globe shape, uniform, deep scarlet. Short top variety suitable for forcing. Holds well before going pithy.	.10	.15	.35
Comet. An early, perfectly round variety, of bright scarlet color, thin tap root.	.10	.15	.35
Royal Red Forcing. 22 days. Roots are perfectly round, bright scarlet color. Flesh is white and crisp. Extremely early with very small tops.	.10	.15	.35
Early Scarlet Globe. 23 days. For greenhouse forcing and outdoor culture. Roots are olive-shaped, bright scarlet, crisp and tender.	.10	.15	.35
Crimson Giant. 28 days. Roots large, globular, bright crimson color.	.10	.15	.35
French Breakfast. 25 days. Olive-shaped, about 1½ inches long, deep scarlet with white tip, small top. Flesh white and crisp.	.10	.20	.50
Sparkler. 26 days. Roots round, of bright scarlet color, one-third white at bottom.	.10	.20	.50
White Icicle. 27 days. Long, slender, waxy white roots, very crisp and of delicious flavor. Tops are small.	.05	.15	.35
Cincinnati Market. 28 days. Long red radish with short tops.	.05	.15	.35
White Strasburg. 39 days. Roots about 5 inches long, tapering and smooth. Flesh white, crisp, and slightly pungent.	.05	.15	.35
White Chinese or Celestial. 60 days. Roots about 8 inches long, thick, and blunt at both ends. A winter variety.	.05	.15	.35
China Rose. 52 days. A popular winter sort. Roots 4 to 6 inches long, thicker at the lower end. Blunt, skin deep rose, flesh white, pungent.	.05	.15	.35



Early Scarlet Globe Radish

RADISH (Continued)

	Pkt.	oz.	¼ lb.
Round Black Spanish. 56 days. A winter variety. Skin black, flesh white.	.05	.15	.35
Long Black Spanish. 58 days. A good winter keeper, skin black, flesh white, solid, and very pungent.	.05	.15	.35

RHUBARB

Giant Victoria. Large, tender, the finest cooking sort.	.10	20	.40
--	-----	----	-----

RHUBARB ROOTS. (Ready from October to May 15th).

MacDonald. Large red stalks, tender, of fine flavor. Each 35c, 4 for \$1.20 postpaid.			
Victoria. Large, tender, fine cooking sort. Each 20c, 4 for 60c postpaid.			

SALSIFY

Mammoth Sandwich Island. Large, strong growing, with long, smooth tapering roots of delicate flavor.	.10	.20	.50
---	-----	-----	-----

SPINACH

Letherman's New Imperial. 40 days. Early and very long standing. Leaves are thick, very much curled and crumpled, and very dark glossy green.	.10	.15	.30
Re-selected Bloomsdale. 42 days. A fine strain, early, from which most of the male plants (which are the first to bolt to seed) have been eliminated.	.10	.15	.30
Nobel. 45 days. Best of the smooth leaved sorts, stands long before bolting to seed. Leaves large, thick, deep green, tender, and well-flavored.	.10	.15	.30
New Zealand. Not a true spinach, it thrives in hot weather. Small pointed leaves have the appearance and flavor of spinach when cooked. Forms new leaves after the outer ones have been cut throughout the summer.	.10	.15	.30
Virginia Savoy (Blight Resistant). Bred for mosaic resistance. Up-standing, vigorous plants. Leaves somewhat smoother than other strains of Savoy.	.10	.15	.30
Princess Juliana. Compact, dark green crumpled leaves. Slow to bolt to seed. Desirable mid-season sort.	.10	.15	.30

SQUASH-SUMMER VARIETIES

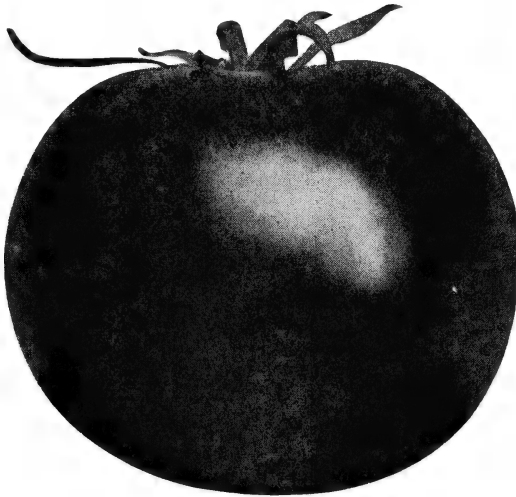
Giant Summer Crookneck. 58 days. Plants dwarf and bushy. Fruit 14 inches long, heavily warted. Skin golden yellow, flesh thick and finely grained.	.10	.15	.40
Giant Summer Straightneck. 60 days. Has all the good qualities of the Giant Crookneck. Fruits measure about 18 inches, are deep orange yellow.	.10	.15	.40
Early White Bush or Patty Pan. 52 days. Fruits creamy-white, round, flat and scalloped. Flesh is tender and highly flavored.	.10	.15	.45
Fordhook. 62 days. Fruits oblong, creamy-white skin, flesh sweet and thick.	.10	.20	.50
Cocozella or Italian Vegetable Marrow. 65 days. Fruits long, best for the table when 6 to 8 inches long. Skin dark green changing to green and yellow stripes as it ripens. Flesh thick and of fine flavor.	.10	.15	.45

SQUASH—WINTER VARIETIES

Acorn, Table Queen or DesMoines. 58 days. Fruits acorn shaped, ribbed, deep green skin. Flesh is deep yellow, thick, dry, and sweet.	.10	.15	.45
Blue Hubbard. 110 days. Fruits are large, of fine quality, with very hard blue-gray rind. Flesh is orange-yellow, thick, of fine flavor.	.10	.20	.50
Golden Delicious. 100 days. Top shaped with deep orange skin. Flesh is bright yellow and of finest quality.	.10	.15	.45
Improved Hubbard. 105 days. Skin dark green, warted. Flesh orange-yellow.	.10	.20	.50
Chicago Warted Hubbard. 110 days. Larger than Improved Hubbard, dark green, thickly warted.	.10	.20	.50

SWISS CHARD

Special Large White-Ribbed. Large, crumpled, green leaves which may be cooked like spinach.	.05	.15	.30
--	-----	-----	-----



Marglobe

TOMATO

The Pritchard or Scarlet Topper. 73 days. Popular wilt-resistant variety. Fruits of good size and solid, smooth, and globe shaped.

Pkt. ½ oz. 9z.

.10 .25 .40

Break O' Day Extra Early. 67 days. Very productive variety, largely disease resistant. Fruits are smooth, red, meaty, and globe shaped.

.10 .25 .40

Scarlet Dawn. 70 days. Early and prolific variety of medium growth. Fruits are globular & smooth, thick-walled, ripen well to the stem.

.10 .25 .40

John Baer. 70 days. Medium sized fruits, semi-globular, brilliant red color, few seeds and no core. A very fine early variety.

.10 .25 .40

Earliana. 66 days. A very early, thick-flat tomato of medium size.

.10 .25 .40

Bonny Best. 73 days. A good second-early red variety. Fruits are medium size, flattened globe shape, smooth, and solid.

.10 .25 .40

Greater Baltimore. 82 days. Large vines with medium foliage. Fruits are large, thick-flat, deep red, solid, and ripen evenly and free from cracks.

.10 .25 .40

Letherman's Paramount. Plants are sturdy and very prolific. Fruits ripen evenly, are large, smooth, have few seeds and no core.

.10 .25 .40

Marglobe. 77 days. Strong plants with heavy foliage, disease resistant. Fruits medium size, globe shaped, smooth, solid, deep scarlet.

.10 .25 .40

Rutgers Certified. A prolific, wilt resistant variety. Fruits are large, solid, ripen from inside out. Fine flavor with little acid.

.10 .30 .50

Beefsteak. 90 days. Fruits are large, flattened, scarlet color.

.10 .35 .55

Stokesdale. New Wilt-resistant. 58 days. Early medium-sized scarlet fruit. Smooth, solid, ripening from the inside outward.

.10 .30 .50

PINK FRUITED VARIETIES

Marhio. 75 days. A very early variety. Fruits grow in clusters, are meaty with small seed cavity. Desirable for greenhouse culture.

.10 .25 .40

Livingston's Globe. 82 days. Fruits purplish rose color, large, and smooth. A very productive variety. Often used for forcing.

.10 .25 .40

Ponderosa. 88 days. Very large, flat, with few seeds, mild flavor.

.10 .35 .55

Oxheart. 90 days. Large, heart-shaped fruits, solid with mild flavor.

.15 .50 .95

Golden Queen. 84 days. Bright yellow, nearly globe-shaped fruits.

.10 .25 .50

Yellow Ponderosa. 89 days. Similar to Ponderosa, but bears rich, golden yellow fruits.

.10 .25 .50

Mingold. 73 days. A splendid Acid-Free yellow variety. One of the All America Selections for 1940.

.10 .30 .55

Husk Tomato or Ground Cherry.

.10 .35 .60

TURNIP

Pkt. oz. ¼ lb.

Purple Top White Globe. 57 days. A rapid growing sort. Flesh is pure white, best flavored; skin is white, with purple top.

.05 .10 .20

Purple Top Strap Leaf. 46 days. Roots are flat; white below, with a purple top. Flesh is white, leaves short.

.05 .10 .20

Early Purple Top Milan. 42 days. Roots are flat, upper portion purple.

.05 .10 .20

Seven Top. A hardy foliage turnip, grown principally for table greens and forage. The young shoots are very tender.

.05 .10 .20

	Pkt.	oz.	¼ lb.
RUTABAGA or SWEDE			
American Purple Top Yellow. 90 days. A heavy yielding variety. Roots are large, globular, with yellow flesh which is very sweet and tender.	.05	.10	.25
WATERMELON			
Stone Mountain No. 5. Wilt Resistant. 80 days. A large, nearly round melon, rich green color, with highly colored scarlet, sweet flesh.	.10	.15	.30
Dixie Queen. 85 days. Melons are medium size, oval round, with bright red, fine-grained flesh. Tough rind is marked with dark and light green stripes.	.10	.20	.50
Improved Kleckley Sweet No. 6. Wilt Resistant. 85 days. Melons are 18 to 20 inches long and very dark green. Flesh bright red, extremely sweet.	.10	.15	.30
Winter King and Queen. Light cream with faint light green stripes. Very early and prolific. Flesh is fine quality and keeps well in storage.	.10	.15	.30
Halbert's Honey. 82 days. A long melon, dark green, thin rind with fine veins. Flesh is bright red, tender, exceptionally sweet.	.10	.15	.30
Harris' Earliest or Cole's Early. 75 days. A very early variety. Fruits medium size, oval, with dark and light green stripes. Flesh bright red.	.05	.10	.25
Sweetheart. 85 days. Fruits are large, nearly round. Rind is light green with fine darker veining, flesh bright red, crisp, and sweet.	.05	.10	.25

Fertilizers for Lawn and Garden

All prices f. o. b. Canton, O. and subject to market changes.

ADCO. Mixed with leaves or garden refuse will produce odorless manure in 4 months. 7½ lbs. makes about 300 lbs. manure 75c 25 lbs. makes about ½ ton manure \$2.00 150 lbs. makes about 3 tons manure \$10.50	Muriate of Potash. 50% Potash. 100 lbs. \$3.75.
Aluminum Sulphate. To make soil acid. Best for Rhododendrons. Lb. 15c, 5 lbs. 60c.	Nitrate of Soda. 16% Nitrogen. lb. 15c, 5 lbs. 30c, 10 lbs. 50c, 25 lbs. \$1.00, 100 lbs. \$3.00.
Activated Bone 6-9-5. For lawns and vegetables. 5 lbs. 50c, 10 lbs. 80c.	Peat Moss, Canadian. Adds humus, lightens clay and binds sandy soils. An ideal mulch. Large bales \$4.25 per bale.
Agricultural Gypsum. (Land Plaster). Used for soil sweetening and base for insecticides. 100 lbs. \$2.00.	Plantabbs. Contain Vitamin B-1. 30 tablets 25c, 75 tablets 50c, 200 tablets \$1.00.
Blood Meal. 12% Nitrogen. A quick acting soluble fertilizer for Evergreens, Roses, etc. 5 lbs. 60c, 10 lbs. \$1.00.	Sulphate of Ammonia. 20% Nitrogen. lb. 15c, 5 lbs. 30c, 10 lbs. 50c, 25 lbs. \$1.00.
Bone Meal. (Steamed 2-23). For Roses, Lawns and Flowers. 3 lbs. 25c, 5 lbs. 40c, 10 lbs. 70c, 25 lbs. \$1.50, 100 lbs. \$4.00.	Superphosphate. 20%. 100 lbs. \$1.75.
Bone Meal. (Raw 3-20). For Roses, Lawns and Flowers. 3 lbs. 25c, 5 lbs. 40c, 10 lbs. 70c, 25 lbs. \$1.50, 100 lbs. \$4.00.	Sheep Manure. (Wizard). Pure pulverized with all weed seeds killed. 5 lbs. 30c, 10 lbs. 50c, 25 lbs. \$1.00, 50 lbs. \$1.75, 100 lbs. \$3.00.
Cattle Manure. (Wizard). A natural shredded animal manure for lawn or garden. 5 lbs. 30c, 10 lbs. 50c, 25 lbs. \$1.00, 50 lbs. \$1.75, 100 lbs. \$3.00.	Vigoro. A complete scientifically prepared plant food; produces thick velvety lawns, richly colored flowers, delicious vegetables and healthy full foliage trees.
Cyanamid. 21% Nitrogen. 100 lbs. \$2.50.	100 lb. bag \$4.00
Lime. (Hydrated). 50 lb. bag 50c.	50 lb. bag 2.50
Milorganite. The best dressing in summer for lawns. 25 lbs. \$1.00, 50 lbs. \$1.75, 100 lbs. \$2.75.	25 lb. bag 1.50
	10 lb. carton85
	5 lb. carton45
	1 lb. carton10
	Vigoro Tablets. Specially made for Potted Plants and Flower Boxes. 24 25-grain tablets 10c.

LEATHERMAN'S

FLOWER SEED of SUPERIOR QUALITY

Our growers are the best; the seed we offer is unsurpassed for quality and variety.



These selections based on the unbiased judgment of experts, are made from all worthy new and improved old varieties of flowers and vegetables from around the World. Trials are run in many sections of the United States in open field competition by practical experienced growers. From these trials the judges determine what varieties to recommend as best suited for use of the gardeners of America.

We can supply many of these selections which are described on the following pages and are designated by this symbol. ● Look for it. Take advantage of this splendid service and try them.

	Pkt.	$\frac{1}{16}$ Oz.	$\frac{1}{8}$ Oz.	$\frac{1}{4}$ Oz.
ABRONIA (Sand Verbena) (Annual Rockery)				
4 Umbellata Grandiflora (6 inches) Trailing with bright rose verbenalike flowers. Likes dry poor soil and sun.	.10			.30
ACHILLEA (Milfoil, Yarrow) (Perennial Rockery)				
6 Ptarmica (The Pearl) (2 feet) Pure white double blossoms all summer. Prefers sun.	.10	.35	.65	
8 Tomentosa (6 to 8 inches). Bright yellow flowers. July to September.	.15			
ACONITUM (Monkshood) (Perennial)				
10 Napellus (4 feet) Long spikes, blue helmet shaped flowers. August and September	.10			
AGERATUM (Floss Flower) (Annual Rockery)				
●16 Midget Blue (Silver Medal 1940) Very dwarf (2 to 3 inches) with fine foliage smothered with small Ageratum Blue flowers. The first dwarf Ageratum that will come uniformly dwarf and true to color.	.15	.50	.85	
18 Blue Perfection (9 inches) Large deep blue flowers.	.10		.25	.45
20 Little Blue Star (5 inches) Dwarf, compact covered with bright blue flowers.	.15		.45	.75
22 Blue Cap (6 inches) Flowers are larger than other varieties. Rich blue color.	.15	.40	.75	
ALYSSUM (Madwort) (Annual Rockery)				
24 Lilac Queen (6 inches) A pretty shade of lilac.	.10			.25
26 Little Dorrit (4 inches) Very dwarf and compact, white flowers.	.10			.25
28 Carpet of Snow (4 inches) Spreading habit forming a mass of snow white flowers.	.10			.25
30 Violet Queen. New and a truly revolutionary development in this flower group. The small sweet scented flowers are a deep shade of violet. It will be one of the leading novelties of the season.	.15		.45	
32 Saxatile Compactum (Basket of Gold) (Perennial) (9 inches) Bright yellow flowers.	.10		.25	.40
AMARANTHUS (Annual)				
42 Caudatus (Love-lies-bleeding) (2½ feet) Blood red drooping spikes.	.10			
44 Tricolor (Joseph's Coat) (2½ feet) Ornamental leaves splashed with yellow and red.	.10			.25
46 Combustion. Fiery crimson tufts resembling Poinsettias, makes dazzling display.	.10		.30	.50
ANCHUSA (Alkanet) (Perennial)				
50 Italica Dropmore (3 to 5 feet) Forget-me-not flowers of gentian blue, prefers shade.	.10			.30
52 Myosotidiflora (1 foot) Clusters of charming blue flowers. Prefers shade, fine for rockery.	.15			

ANEMONE (Wind Flower) (Perennial Rockery)			$\frac{1}{16}$	$\frac{1}{8}$	$\frac{1}{4}$
56	Coronaria (Poppy Anemone) (6 to 10 inches) Mixed colors, blooms in June.	Pkt.	Oz.	Oz.	Oz.
		.10		.25	.40
58	St. Brigid (12 inches) Large flowers, semi-double and double. Wonderful array of colors.		.15	.40	.75
60	Pulsatilla Rubra (6 to 9 inches) Dark red erect flowers. April and May.		.15	.75	

ANTIRRHINUM (Snapdragon) (Annual) All varieties rust-proof.						
●64	University of California Mixture (Certificate of Honor 1935) Fine range of colors.		.15	.30	.45	.85

TALL GIANT FLOWERING (Maximum) (30 to 36 inches)							
66	Apple Blossom Rosy Pink	76	Crimson Fiery Crimson	}	.15	.40	.75
68	Alaska White	78	Loveliness Soft Rose Pink				
70	Campfire Luminous Scarlet	80	Finest Mixed All Colors.				
72	Canary Bird Canary Yellow		Extra Fine.				
74	Copper Shades Copper Orange to old Gold						

SEMI-TALL NANUM GRANDIFLORUM (18 to 20 inches)								
Ideal for Bedding								
84	Carmine Rose Bright Carmine	92	Wildfire Bright Orange Scarlet	}	.10	.30	.45	.85
86	Glowing Sunset Rosy Scarlet	94	Finest Mixed All varieties and colors					
88	Indian Girl Beautiful Old Gold							
90	Red Boy Rich Deep Scarlet							

ASTERS

●Wilt Resistant Asters received a Special Award of Merit in 1933					
All varieties listed except California Giants are wilt resistant.					
●100	Los Angeles-Super Giant (Award of Merit 1934) The largest full double Aster. Color is lovely soft shell pink. Flowers from 6 to 8 inches across.		.15	.50	.95
●102	El Monte-Super Giant (Special Mention 1936). Deep glowing crimson.		.15	.50	.95
104	Golden Sheaf. Deepest yellow Aster yet developed. Flowers have full crest-like center.		.10	.40	.65
106	Peerless Pink. Immense flowers 4 to 5 in. across. Beautifully shade of pink.		.10	.35	.55
108	Heart of France. Deep rich ruby red on long strong stems.		.10	.35	.55

ALPINE ASTER (Perennial Rockery)

110	Alpinus Goliath (8 to 10 inches) Large soft blue daisy-like flowers with yellow center.		.15	.40	.70
-----	---	--	-----	-----	-----

HARDY ASTER (Michaelmas Daisy) (Perennial)

112	Mixed. New imported varieties (3 to 4 feet) Autumn blooming.		.10	.75	
-----	--	--	-----	-----	--

EARLY ROYAL

116	Royal White	122	Royal Azure Blue or Lavendar	}	.10 ea.	.30	.55
118	Royal Shell Pink	124	Royal Purple				
120	Royal Deep Rose	126	Royal Mixed. All shades				
Collection Packet each of 5 separate colors, 40c; 3 pkts. 25c							

EARLY BEAUTY

130	White	136	Deep Rose	}	.10 ea.	.35	.60
132	Azure Fairy. Azure Blue	138	Sept. Beauty. Delicate pink.				
134	Purple	140	Crimson				
142 Mixed. All shades							
Collection Packet each of 6 separate colors, 45c; 3 pkts. 25c							

IMPROVED CREGO

146	Pink. Shell pink	152	Deep Rose	}	.10 ea.	.35	.60
148	Blue Flame. Navy blue	154	Crimson				
150	Light Blue	156	White				
158 Mixed. All shades							
Collection Packet each of 6 separate colors, 45c; 3 pkts. 25c							

AMERICAN BRANCHING (2 to 3 feet)

162	Azure Blue	168	Shell Pink	}	.10 ea.	.35	.60
164	Crimson	170	Deep Rose				
166	Purple	172	White				
174 Mixed. All shades							
Collection Packet each of 6 separate colors, 45c; 3 pkts. 25c							

ASTERS (Continued)		Pkt.	$\frac{1}{16}$ Oz.	$\frac{1}{8}$ Oz.	$\frac{1}{4}$ Oz.
CALIFORNIA GIANTS					
176 White	182 Deep Rose	} .10 ea.		.40	.70
178 Peach Blossom	184 Dark Purple				
180 Light Blue	186 Finest Mixed				
Collection Pkt. each of 5 separate colors, 40c; 3 pkts. 25c					
190 Mixed Asters. Contains all wilt resistant types, giving a long blooming season.		.10		.25	.55
AQUILEGIA (Columbine) (Perennial)					
200 Mrs. Scott Elliott's Strain Long Spurred. Fine strain, large size blooms with long spurs forming a mass of color seldom equalled.		.25	.50	.85	
202 Crimson Star Long Spurred. Bright blood crimson sepals with white corolla. Given Award of Merit by Royal Horticultural Society of England.		.25	1.00		
204 Coerulea (Rocky Mountain Columbine). Petals white, sepals deep blue. Native American flower.		.10		.50	.65
206 Long Spurred Blue Shades Improved. Clear blue blooms of slightly varying shades.		.15		.65	
208 Long Spurred Hybrids. Beautiful array of colors.		.10		.40	.60
ARABIS (Rock Cross) (Perennial Rockery)					
214 Alpina (6 inches). Pure white flowers in dense masses in very early spring.		.10		.25	
ARCTOTIS (Blue-eyed African Daisy) (Annual)					
218 Grandis (2 to 3 feet) Daisy-like flowers. Petals white on top, pale lilac underneath, center is delicate mauve surrounded by gold band.		.10			.25
ARENARIA (Sandwort) (Perennial Rockery)					
222 Verna. Prostrate growing plant covered in early spring with small silvery white flowers.		.15			
224 Laricifolia. Large white flowers. Good rock garden plant.		.15			
ARMERIA (Thrift or Sea Pink) (Perennial)					
228 Formosa Large Flowered Hybrids. New. Forms evergreen tufts of grass-like foliage with globe-shaped flowers on long, stiff stems in shades of rose and pink.		.10		.35	.60
AUBRIETIA (Rainbow Rock Cross) (Perennial Rockery)					
232 Large Flowering Hybrids. 6 to 8 inches. Dwarf creeping plant, forming sheets of rose, crimson and blue. Fine for crevices in rocks.		.10		.60	1.00
BALLOON VINE (Love-in-a-puff) (Annual)					
240 Rapid growing vine. Flowers white. Seed vessels like small balloons		.05			Oz. .30
BALSAM (Lady Slipper) (Annual)					
244 Double Camellia Flowered Mixed (2 feet) Brilliant colored flowers all summer.		.10		$\frac{1}{4}$	Oz. .25
BAPTISIA (False Indigo) (Perennial)					
248 Australis (2 feet) Deeply cut leaves with spikes of dark blue. Lupin-like flowers.		.10		.35	.60
BEGONIA (Annual) (1 foot) Fine for bedding and make unsurpassed pot plants.					
252 Semperflorens Bedding Queen. Giant flowering pink.		.25			
254 Gracilis Luminosa. Scarlet with bronze leaves.		.25			
BELLIS (Double English Daisy) (Perennial Rockery)					
258 Double Monstrosa. Finest mixed in red, pink and white. Profuse bloomers.		.10		.50	.85
BROWALLIA (Annual Rockery)					
266 Elata Blue (1 foot) Fine bedding plant, will bloom in winter if cut back and lifted in the fall. Intense shade of blue.		.10		.35	.60
CALENDULA (Pot Marigold) (Annual)					
Old fashioned annual greatly improved in size, form and color.					
●270 Orange Fantasy (Award of Merit 1938). Flowers $3\frac{3}{4}$ inches across. Deep, bronzy orange.		.10		.25	.40
●272 Orange Shaggy (Gold Medal 1935). Petals long and deeply fringed. Deep orange.		.10			.25
●274 Sunshine Chrysantha (Gold Medal 1934). Has wide petals loosely arranged like a Chrysanthemum. Clear buttercup yellow flowers on long stems.		.10			.35
276 Ball's Supreme. Beautiful deep orange with darker center.		.10		.25	.40
278 Radio. Flowers full, petals quilled, rich golden orange.		.10			.35

CALENDULA (Continued)

	Pkt.	$\frac{1}{16}$ Oz.	$\frac{1}{8}$ Oz.	$\frac{1}{4}$ Oz.
280 Campfire. Brilliant orange with scarlet sheen, full yellow center.	.10			.35
282 The Ball. Deep orange, lighter center, very double.	.10			.35
284 Orange King. Large double flowers of deep orange red.	.10			.25
286 Lemon Queen. Pleasing shade of light yellow. Large double flowers	.10			.25
288 Double Mixed. Fine mixture of all varieties.	.05			.15

CALLIOPSIS (Annual)

294 Tall Varieties Mixed (2½ to 3 feet). A fine collection of varieties and colors.	.10			.25
---	-----	--	--	-----

CAMPANULA (Canterbury Bells) (Biennial Rockery)

A charming old fashioned flower of various heights and size of blooms.

●300 Annual Mixed (Gold Medal 1933) (2 to 2½ feet). Blooms from seed in less than six months. Plants have 6 to 8 bloom spikes. Mixture contains dark and light blue, pink, rose and white.	.10		.20	.40
302 Calycanthema (Cup and Saucer) (2 to 2½ feet) Mixed colors.	.10		.30	.50
304 Campanula Medium Double Mixed.	.10		.25	.40
306 Campanula Medium Single Mixed.	.10			.30
308 Pyramidalis (Chimney Bell Flower) (4 to 5 feet) Large broad tubular flowers.	.10		.40	.70
310 Carpatica (Carpathian Harebell) (6 to 8 inches). Clear blue flow- on erect stems.	.10		.30	.50
312 Rotundifolia (Blue Bells of Scotland) (6 to 12 inches). Dainty clear blue pendent flowers.	.15			

CANDYTUFT (Iberis) (Annual Rockery)

320 Giant Hyacinth Flowered. 12 inches. Bears large bold spikes of snow white flowers.	.10			.35
322 Rose Cardinal. Brilliant deep rose effective for bedding.	.10			.20
324 Lavender. A beautiful delicate shade.	.10			.20
326 Mixed. All colors.	.10			.20
330 Sempervirens (Perennial) (12 inches). Plants remain green all winter and when in bloom in spring are a mass of white.	.10		.30	.50

CANARY BIRD VINE (Annual)

334 Pretty climber with cut leaves and clear canary yellow flowers. 10 to 15 feet.	.10			
---	-----	--	--	--

CARDINAL CLIMBER (Annual)

338 Strong rapid grower. (20 to 25 feet). Glossy fern-like leaves. Car- dinal flowers.	.10		.20	.30
---	-----	--	-----	-----

CARNATION (Annual)

342 Giant Marguerite Double. (1 foot). Early flowering. Fine mixture of colors.	.10		.35	.60
344 Chabaud's Giant Improved Double. Come into bloom 5 months after seed is sown and bloom all summer. Flowers large double and sweet scented. All colors.	.15		.40	.75

CELOSIA (Cockscomb) (Annual)

350 Cristata Nana Empress. 1½ feet. Enormous crimson heads like a cock's comb.	.10		.30	
352 Cristata Mixed.	.10		.25	.45
354 Plumosa Thompson's Magnifica. (3 feet). Mixture of improved varieties.	.10		.20	.35
356 Chinese Wool Flower. Forms large globular heads like balls of wool.	.10		.25	.40

CENTAUREA (Cornflower) (Annual)

●360 Jubilee Gem (Award of Merit 1937). Grows about 12 inches high, covered with large double blue flowers, makes ideal border and rockery plant.	.15	.25	.40	.60
362 Cyanus Double Blue (Bachelor's Button) (2 feet). Old favorite much improved.	.10			.25
364 Cyanus Double Mixed. All colors.	.10			.20
374 Imperialis (Giant Sweet Sultan) (2½ feet). Deeply cut and fringed flowers.	.10			.30
376 Suaveolens (Yellow Sweet Sultan or Grecian Cornflower)	.10			.30
378 Montana (Perennial (2 feet). Large violet blue flowers. July to September.	.10			.30
380 Gymnocarpa (Dusty Miller). Finely cut leaves of silvery white.	.10		.30	.50
382 Candidissima (Dusty Miller). Thick silvery white leaves.	.10		.25	.45

		$\frac{1}{16}$	$\frac{1}{8}$	$\frac{1}{4}$
	Pkt.	Oz.	Oz.	Oz.
CERASTIUM (Snow in Summer) (Perennial Rockery)				
385 Tomentosum (4 inches). Low growing plant with silvery white woolly leaves, white flowers.	.10		.25	
CHEIRANTHUS (Wall Flower) (Biennial Rockery)				
390 Allioni (Siberian Wall Flower) (1 foot). Dazzling fiery orange flowers. Fine rockery plant.	.10			
392 Linifolius (Alpine Wall Flower) (9 inches). Beautiful lilac blossoms	.10		.20	
COLEUS (Annual)				
416 "Holco" Large Leaved. Beautiful colored leaves, fine for bedding.	.25			
COREOPSIS (Perennial)				
420 Lanceolata Grandiflora (2 feet). Golden yellow flowers all summer	.10			.25
422 Double Sunburst . Large golden yellow, fully double flowers.	.10		.25	
COSMOS (Annual) 3 to 5 feet. Supply a colorful effect when other flowers are past their blooming period.				
●426 Sensation Mixed (Award of Merit 1936) . Very early giant flowered variety, blooms 4 to 6 inches across, colors white and two shades of pink.	.15			.75
●428 Orange Flare (Early Klondyke) (Grand Champion Gold Medal 1935) . Plants 2 to 3 feet are in full flower 4 months after seed is sown. Color a bright vivid orange.	.10		.35	
Extra Early Single				
432 Crimson ; 434 Pink ; 436 White ; 438 Mixed .	.10 ea.			.20
Early Double Crested				
442 Pink ; 444 White ; 446 Crimson ; 448 Mixed .	.15 ea.			
Mammoth Late Single				
452 Pink ; 454 White ; 456 Crimson ; 458 Mixed .	.10 ea.			.20
CORAL BELLS (See Heuchera)				
COWSLIP (Primula Officinalis) (Perennial Rockery)				
462 Hybrida (6 inches). Delightful early spring flowers of bright yellow.	.15			
CYNOGLOSSUM (Chinese Forget-me-not) (Annual)				
470 Amabile (18 to 24 inches). Produces large sprays of brilliant forget-me-not blue flowers.	.10			.25
●472 Firmament (Bronze Medal 1939) . A dwarf type of this flower. Bushy plants are 15 to 18 inches tall. Flowers are rich blue.	.25			
CYPRESS VINE (Annual) Graceful climber (15 feet). Fern-like foliage, small star-shaped flowers.				
478 Mixed, White and Scarlet	.10			.20
DAHLIAS (From Seed) (Annual)				
482 Unwin's Dwarf Hybrids Mixed . These hybrids have double and semi-double flowers.	.15	.30	.50	
484 Coltness Hybrids . This strain contains a brilliant range of colors.	.15	.30	.50	
DAISY-SHASTA (Perennial)				
486 Alaska (2½ to 3 feet), Large white flowers on long graceful stems.	.10		.30	.50
DELPHINIUM (Hardy Larkspur) (Perennial)				
●490 Cambridge Blue (Award of Merit 1933) (Annual) . (2 to 3 feet). This variety is similar to Belladonna far surpassing it in brilliancy. It is a rich clear blue.	.15			
492 Belladonna (2 to 3 feet). Beautiful light sky blue, blooms in April, again in September.	.15		.65	
494 Bellamosum Improved . Large deep blue flowers with white bees.	.15	.65		
496 Blackmore and Langdon Type . Immense spikes of large flowers, in a wonderful combination of shades.	.25			
498 Wrexham or Hollyhock Type . Flowers of exquisite art shades produced on graceful spire-shaped spikes of enormous size.	.35			
500 Pacific Giants . Large flowered tall growing, exquisite colors. Mildew proof.	.50			
DIANTHUS (Pinks)				
Hardy Varieties (Perennial Rockery)				
510 Plumarius Semperflorens Florists Pink . Sweet scented double and single in many colors.	.10		.35	.60
512 Plumarius Single (Pheasants Eye) . Fringed white flowers with dark center.	.10			.30

DIANTHUS (Pinks) (Continued)

	Pkt.	$\frac{1}{16}$ Oz.	$\frac{1}{8}$ Oz.	$\frac{1}{4}$ Oz.
514 Deltoides Maiden's Pink. Fine feathery foliage, rose colored flowers. Annual Varieties (12 inches)	.10		.50	.85
520 Mourning Cloak. Rich velvety crimson edged white, double.	.10			.35
522 Punctatus Princess Pinks. Single fringed flowers, great range of colors.	.10		.25	.40
524 Heddewigii (Single Japan Pinks). Fine mixed colors.	.10			.25
526 Sweet Wivelsfield. (Hardy Annual) Grows like Sweet William with larger blooms and wider range of colors.	.10		.25	.40
DIGITALIS (Foxglove) (Perennial)				
540 Giant Shirley (5 to 7 feet). Colors range from white and shell pink to deep rose.	.10		.30	.50
542 Gloxinioides. Spotted flowers on long graceful spikes.	.10		.25	.40
DIMORPHOTHECA, African Daisy-Cape Marigold				
556 Aurantiaca. Golden Orange African Daisy (15 inches). Glossy rich golden flowers.	.10		.25	.40
DOLICHOS (Hyacinth Bean) (Annual). Climber.				
560 Darkness. Reddish violet flower followed by rich purple seed pod.	.05			.20
562 Daylight. Pure white flowers, silvery seed pods.	.05			.20
ERINUS (Liver Balsam) (Perennial Rockery)				
566 Alpinus Roseus (4 inches). Tufted plants with rosy purple flowers.	.25			$\frac{1}{4}$ Oz.
ESCHSCHOLTZIA (California Poppy)				
570 Ramona Hybrids (Fine Mixed). Compact erect strain. Beautifully frilled and incurved flowers.	.10			.35
572 Aurantiaca (California Poppy). Rich orange.	.10			.25
574 Golden West. Yellow with orange center.	.10			.25
576 Geisha. Brilliant gold inside, orange crimson outside.	.10			.25
578 Lovely. Bright rose pink.	.10			.25
580 Crimson. Carmine crimson.	.10			.25
582 Fine Mixed. New large flowering type contains many new shades. Collection—One packet each 6 varieties including Ramona for 50c.	.10			.25
EUPHORBIA (Annual)				
590 Variiegata (Snow-on-the-Mountain). Light green leaves with white edges.	.10			.25
592 Hetrophylla (Mexican Fire Plant). Annual Poinsettia. Center top leaves turn orange-scarlet.	.10			.30
EVERLASTING FLOWERS (Annual)				
596 All Varieties Mixed. Unsurpassed for winter decoration. Cut before fully expanded and hang on a line with the heads down in a dark dry room.	.10			Oz. .20
FEVERFEW (Matricaria) (Annual)				
600 Double White (18 inches). Neat small double white flowers.	.10			$\frac{1}{4}$ Oz. .30
602 Eximia Golden Ball (12 inches). Compact habit. Striking double yellow flowers.	.10		.40	.70
FLOWER GARDEN MIXTURE (Annuals)				
606 Mixture contains many different kinds of garden annuals, all easy to grow.			.10	.25
GAILLARDIA (Blanket Flower) (Annual and Perennial)				
610 Picta Lorenziana (Annual) (2 feet). Fine mixed colors, double flowers.	Pkt. .10	$\frac{1}{8}$ Oz.	$\frac{1}{8}$ Oz.	$\frac{1}{4}$ Oz. .25
612 Grandiflora Portola Hybrids (Perennial). Large bronze red gold tipped flowers.	.10		.35	.60
614 Burgundy. Dark scarlet flowers 2½ inches across on long stiff stems.	.10		.60	1.00
616 The Dazzler. Large golden yellow with maroon center.	.10		.35	.60
618 Sanguinea. Copper red, very striking.	.10		.30	.55
GERBERA (Transvaal Daisy) (Half Hardy Perennial)				
622 Jamesoni Hybrids. Daisy-like flowers on stiff stems. Wide range of colors in pastel shades.	.25			
GEUM (Avens) (Perennial)				
626 Mrs. Bradshaw (18 inch). Double flowers of fiery red.	.10		.50	
628 Lady Stratheden (Golden Ball). Rich golden yellow double.	.10		.60	

		Pkt.	$\frac{1}{16}$ Oz.	$\frac{1}{8}$ Oz.	$\frac{1}{4}$ Oz.
GLOXINIA (House Plant)					
636	Large Flowering Mixed. (12 inches). Magnificent house plant. Handsome bell-shaped flowers in a great variety of colors.	.25			
GOURDS (Annual)					
646	Large Varieties Mixed	Oz. .40	.10		.15
648	Small Varieties Mixed	Oz. .40	.10		.15
GYPSOPHILA (Baby's Breath) (Annual-Perennial-Rockery)					
652	Elegans Grandiflora (Annual). (2 feet). Large flower. Pure white.	.10			.20
654	Paniculata (F. Pl. Perennial) (2 to 3 feet). Double flowering form.	.15	.50		.85
656	Paniculata (Perennial) (2 to 3 feet). Single flowers on branched stems.	.10			.25
658	Repens. (Perennial) (6 inches). Trailing habit with clouds of small white and pink flowers.	.10		.40	
HELIANTHEMUM (Sun Rock Rose) (Perennial Rockery)					
662	Mutabile. Low growing evergreen plant forming clumps, pale rose blooms.	.10		.25	.40
HELICHRYSUM (Strawflower) (Annual)					
Very attractive while growing and excellent for drying for winter bouquets. Treat as for everlastings.					
666	Canary Yellow	672 Scarlet	} .10 ea.		.25
668	Fireball Bright Red	674 Violet		678 Mixed, All Colors	
670	Salmon	676 White			
Collection Packet each of 6 Colors, 45c					
HELIOTROPE (Annual)					
682	Lemoines Giant (18 inches). Large flowers ranging from dark to light.	.10		.40	.70
HESPERIS (Sweet Rocket) (Perennial)					
686	Purpurea (2 to 3 feet) Purple fragrant flowers.	.10			.20
688	Alba. White.	.10			.20
HEUCHERA (Coral Bells) (Perennial Rockery)					
692	Sanguinea (18 inches). Mats of dark green heart-shaped leaves from which rise slender spikes bearing clusters of charming bell-shaped flowers of coral red.	.10	.75	1.25	
HIBISCUS (Marshmallow) (Perennial)					
Showy plants 5 to 6 feet with enormous flowers. Effective in shrubby plantings.					
700	Red	704 White with Crimson Eye	} .10 ea.		.25
702	Mallow Pink	706 Yellow with Maroon Eye			
708 Mixed All Colors					
Collection Packet each of 4 Colors for 30c					
HOLLYHOCK (Perennial)					
712	Double Scarlet	718 Double Yellow	} 10 ea.		.35
714	Double Maroon	720 Double Newport Pink		724 Double Mixed	
716	Double White	722 Double Rose			
Collection Packet each of 6 Colors for 50c					
725	Indian Spring. Blooms in 5 months after sowing. Makes colorful display of semi-double crinkly edged flowers. If cut back after first bloom will produce a second crop.	.15		.40	.75
726	Allegheny (Mixed Semi-double). Beautifully fringed in lovely pastel shades.	.10		.25	.40
HUMULUS (Japanese Hop) (Annual)					
730	Japonicus Variegatus. Variegated leaves. 20 to 30 feet. Not affected by heat or insects.	.10			.25
HUNNEMANNIA (Bush Eschscholtzia) (Annual)					
●734	Sunlight (Award of Merit 1933). Double flowered poppy of bright canary yellow.	.10			
ICE PLANT (Mesembryanthemum) (Annual)					
738	Crystallinum (6 inches). Foliage covered with ice-like globules. Flowers pinkish white.	.10			.20
IMPATIENS (Sultan's Balsam) (Annual)					
742	Holstii Hybrida. Colors range from pink through red shades to purplish violet.	.20			
KOCHIA (Summer Cypress or Mexican Fire Bush) (Annual)					
746	Plants resemble small evergreens which turn to deep crimson in late fall.	.10			.20

	Pkt.	$\frac{1}{8}$ Oz.	$\frac{1}{8}$ Oz.	$\frac{1}{4}$ Oz.
LANTANA (Annual)				
754 Hybrida Compacta. Clusters of fragrant flowers, in a single cluster all the shades of crimson, rose, yellow and orange appear.	.10		.25	.40
LARKSPUR (Annual)				
TALL DOUBLE STOCK FLOWERED (4 feet)				
●760 Rosamond (Gold Medal 1934). Pure deep rose.	.10			
762 Dark Blue 768 Lustrous Carmine	}	.10	ea.	.25
764 White 770 Exquisite Pink 774 Mixed All Colors				
766 Lilac 772 Sky Blue				
Collection Pkt. each 7 separate colors, 55c				
GIANT IMPERIAL (4 feet)				
780 Imperial Mixed. Ideal for cutting as the stems branch from the base of the plant.	.10		.25	.40
●782 White King (Special Mention 1937). Pure glistening white.	.10		.25	.40
LATHYRUS (Hardy Sweet Pea) (Perennial)				
790 Latifolius. Mixed. Climbing vines with flowers resembling Sweet Peas.	.10			.25
LEONTOPODIUM (Edelweiss) (Perennial Rockery)				
794 Alpinum (4 to 5 inches). Alpine plant with white leaves and small yellow flowers.	.25			
LIATRIS (Kansas Gay Feather or Blazing Star) (Perennial)				
796 Scariosa. Spikes about 3 feet high. Flowers a good clear purple.	.10			
798 Callilepsis. Deep lilac.	.10			
LINUM (Flax) (Perennial Rockery)				
800 Flavium. (2 feet). Light feathery foliage. Transparent yellow flowers.	.10	.85	1.25	
802 Narbonnense. Spreading clumps of attractive foliage. Azure blue flowers.	.10		.50	.85
804 Perenne. 2 feet. Dainty sky-blue flowers on graceful stems. Feathery foliage.	.10			.25
LOBELIA (Annual and Perennial)				
810 Crystal Palace Compacta. 4 inches. Dark foliage, rich dark blue flowers.	.10		.30	
812 Cambridge Blue. (4 inches). Light foliage, clear sky blue flowers.	.10		.40	
814 Sapphire. Trailing. Deep blue flowers with white eye.	.10		.50	
816 Cardinalis (Cardinal Flower). Perennial. Intense scarlet flowers. Likes moist ground.	.10			
LUNARIA (Honesty or St. Peter's Penny) (Biennial)				
820 Thrives almost anywhere. Flowers reddish purple followed by silvery transparent seed pods. Fine for winter bouquets.	.10			.30
LUPINUS. Annual and Perennial.				
●824 Russell Lupins (Awarded the Coveted Gold Medal of the Royal Horticultural Society of England). Contains many new shades in self and bi-colors. Plant 3½ to 4 feet high. 20 seeds 25c; 65 seeds 65c.				
●826 Hartweigi Giant's (Award of Merit 1932) (Annual) (3 to 4 feet) Base branching.	.10			.20
828 Polyphyllus. Mixed Perennial 2½ to 3 feet. All colors.	.10			.25
LYCHNIS (Maltese Cross) (Perennial)				
840 Arkwrighti. (2 to 3 feet). Beautiful hybrids ranging in color from orange scarlet to soft salmon pink.	.10		.45	.80
842 Alpina. 4 inches. Close tufts of olive green with clusters of rose colored blooms.	.25			
MARIGOLD (Tall Double African Varieties) (Annual)				
●850 Early Sunshine (Bronze Medal 1939). Very early dwarf strain of Dixie Sunshine. Plants 24 inches tall, bright lemon colored blooms.	.15		.50	.85
●852 Crown of Gold (Gold Medal 1937). The crown which resembles a chrysanthemum is surrounded by a row of big broad petals. Flowers are sweet scented and clear golden orange color. No Marigold odor.	.10		.35	.60
●854 Dixie Sunshine. (Award of Merit 1936). Rich golden yellow flowers are borne on tall plants and resemble chrysanthemums. Plants do not have the odor.	.10		.35	.60

	Pkt.	$\frac{1}{16}$ Oz.	$\frac{1}{8}$ Oz.	$\frac{1}{4}$ Oz.
MARIGOLD (Continued)				
●856 Guinea Gold. (Gold Medal 1933). Covered with semi-double carnation-like blooms of brilliant orange flushed with gold. Free of Marigold odor.	.10			.30
858 Yellow Supreme (Gold Medal 1935) A full carnation-flowered variety of rich creamy lemon-yellow color. Slightly larger than Guinea Gold.	.10		.25	.40
860 Sunset Giants. The largest of the Marigolds bloom 5 to 7 inches across.	.10		.35	.60
862 Lemon All-Double. 3 feet. Clear lemon yellow.	.10		.35	.60
864 Orange All-Double. Companion to Lemon All-Double.	.10		.35	.60
866 African Double Mixed.	.10			.25
●868 Goldsmith (Bronze Medal 1941). (2 to 4 feet). Giant chrysanthemum-flowered of Dixie Sunshine type. Early and free blooming on strong bushy plants, golden orange color.	.25			
Dwarf French Varieties				
●870 Dwarf Royal Scott All Double. (Special Mention 1937). Bushy plants about 10 to 12 inches. Color rich mahogany and gold in uniform stripes.	.10		.35	.60
872 Legion of Honor (Little Brownie). Bright yellow and crimson spots and blotches.	.10			.25
●874 Spry (Silver Medal 1941) (9 inches). Plants compact and uniform. Early and profuse bloomer. Flowers light orange, crested center and maroon outer petals.	.25			
876 Dwarf Double Mixed.	.10			.20
878 Pot O' Gold (Dwarf Gigantea). Showy, fragrant and exceptionally large-flowered. The brilliant orange blooms are very effective as cut flowers.	.25			
880 Dwarf Double Harmony. One of the finest Marigolds ever introduced. Plants 12 inches high, covered with charming flowers of Scabiosa-like formation.	.10		.20	.35
882 Dwarf Double Harmony Hybrids. Have all the fine features of Harmony combined with a wide and varied range of colors. Plants 12 to 14 inches high. 100% all double.	.15			
884 Ferdinand Single Tall French Harmony Type. The single flowers have a neat round crested center of golden yellow surrounded by a single row of mahogany red guard petals. 2 feet high. Blooms 3 months after seed is sown.	.15			
TAGETES (Signata Pumila)				
886 Little Giant. Has dainty fern-like foliage covered with single deep orange flowers. Plants 6 inches high with a spread of 8 to 10 inches.	.10		.20	.30
MARVEL OF PERU (Four O'Clocks) (Annual)				
890 Choice Mixed. Bushy plants with flowers of red, rose, lilac and yellow.	.10			Oz. .20
MATRICARIA (See Feverfew)				
MIGNONETTE (Annual)				
892 Large Flowering Mixed. A fine mixture of large flowering sorts.	.10			$\frac{1}{4}$ Oz. .25
894 Matchet. Best all-purpose variety. An ever-bloomer.	.10			.25
896 Goliath. Robust grower with enormous flower spikes 7 inches long. Delightfully fragrant.	.10			.35
MOON FLOWER (Annual)				
900 Grandiflora. Plants covered with large white fragrant flowers at night.	.05			Oz. .50
902 Bona Nox. Violet blue flowers.	.10			
MORNING GLORY (Annual)				
●906 Scarlet O'Hara (Gold Medal 1939). Different from other varieties. Produces brilliant carmine blooms early and continues till frost. $3\frac{1}{2}$ to 4 inches across.	.10		.35	.60
908 Cornell. Combines the brilliant red of O'Hara with a border of glistening white.	.10		.50	.85
910 Heavenly Blue Improved. Flowers are of true blue, $3\frac{1}{2}$ to 4 inches across.	.10		.20	.35
914 Giant Japanese. Flowers of immense size and wide range of colors.	.10		Oz.	.25

	Pkt.	$\frac{1}{16}$ Oz.	$\frac{1}{8}$ Oz.	$\frac{1}{4}$ Oz.
MYOSOTIS (Forget-me-not) (Annual and Perennial Rockery)				
916 Alpestris (Victoria). Dwarf and bushy plants with large sky blue flowers.	.10		.25	.40
918 Alpestris (Rosea Grandiflora). 8 inches, with sprays of large pink flowers.	.10		.25	.40
920 Palustris Semperflorens (Perennial). Large clear blue flowers in sprays.	.10		.50	.85
NASTURTIUM (Annual)				
●924 Dwarf Double Golden Globe (Award of Merit 1936). Dwarf compact plant.	.10		.15	.50
●926 Golden Gleam (Gold Medal 1933). Vigorous grower. Rich golden blooms 2½ to 3 inches across.	.10		.20	.60
●928 Scarlet Gleam (Gold Medal 1935). Like Golden Gleam, with fiery orange scarlet flowers.	.10		.20	.60
●930 Gleam Hybrids (Award of Merit 1935). Gorgeous colored double flowers.	.10		.20	.60
932 "Holco" Tall Mixed. Colors range through every shade known in Nasturtiums.	.05		.15	.40
934 "Holco" Dwarf Mixed. Fine collection of colors.	.05		.20	.50
NEPETA (Ground Ivy or Catmint) (Perennial Rockery)				
938 Dwarf compact plants with dainty lipped flowers of beautiful lavender.	.10	.35		.60
NIEREMBERGIA Hippomanica (Dwarf Cup Flower) (Half Hardy Perennial)				
950 Starts blooming when plants are only 2 inches tall and keeps on until frost. Plants are continually covered with lovely lavender flowers with a touch of yellow in the center.	.25			
NICOTIANA (Sweet Scented Tobacco) (Annual)				
942 Affinis. 2 to 3 feet. Pure white, sweet scented, branching habit.	.10			.25
944 Sanderæe Hybrida Mixed. A splendid type in a variety of colors.	.10			.30
OENOTHERA (Evening Primrose) (Biennial)				
958 Lamarckiana. (1 to 1½ feet). Likes dry location and plenty of lime. Large yellow flowers.	.10			.25
PANSIES (Annual)				
960 Holco Giant Prize. Large flowers of great substance, rich solid colors	.15		1.00	6.00
962 Giant Exhibition. Fine strain of rich colors.	.20	1.00	1.75	
●964 Swiss Giants. (Award of Merit 1933). Magnificent strain of extra large flowers.	.20	.75	1.25	8.00
966 Masterpiece (Ruffled). Curled and ruffled petals. Extensive range of colors.	.10		.50	4.00
968 Trimardeau Giant. Vigorous compact plants with large showy flowers.	.10		.35	4.00
PENSTEMON (Beard Tongue) (Perennial)				
970 Sensation Improved (2 feet). An attractive perennial for the hardy border.	.10		.60	1.00
PETUNIA (Annual)				
Letherman's Gorgeous Giants (Ruffled). Giant flowers 5 to 8 inches across are beautifully ruffled with strongly veined handsome dark throats.				
974 Soft Pink	978 Rich Mauve	982 Mixed, All Colors	Pkts. 35c each 500 Seeds \$1.15	
976 Warm Red	980 Bronze Copper			
984 Giant Ruffled Fringed. Has a delicate fringed edge in addition to the ruffling. Beautifully veined and marked, deep dark centers.				
			Pkt. 25c	100 Seeds \$1.00
986 Giants of California. Very large flowers with deep yellow throats.				
			Pkt. 35c	500 Seeds \$1.15
988 Double Large Flowering Mixed. Flowers very large, petals fluted and crinkled.				
			Pkt. 25c	500 Seeds \$1.00
●990 Hollywood Star (Silver Medal 1939). A charming shade of rich rose with an amber throat. It is unique in that it has a 5-pointed star in the center of the bloom.				
			.15	.40 .70

PETUNIA (Continued)

	Pkt.	$\frac{1}{16}$ Oz.	$\frac{1}{8}$ Oz.	$\frac{1}{4}$ Oz.
992 Velvet Ball (Bronze Medal 1939). Plants 8 inches high with a spread of 8 to 10 inches. Blooms are 2½ inches across, well shaped and a deep shade of velvety blood red.	.15			
●994 Blue Gem (Recommended 1938). Nana Compacta type, forms perfect ball-shaped plants covered with violet blue flowers.	.15			
●996 Topaz Rose. Brilliant addition to the Hybrids group. The color is a fiery velvety rose, slightly suffused with gold. Color will neither fade nor burn.	.15	.50	.85	
998 Snowstorm Improved. Glistening white shading yellow in throat. Flowers 4 to 5 inches across.	.25			
●1000 Martha Washington (Award of Merit 1935). A ruffled and frilled compacta type. Plants form a ball 9 inches high covered with the lovely frilled bloom. The frilled portion is a bluish pink, the center strongly veined a wine red.	.15			
●1002 Rose Gem (Award of Merit 1936). The plant is neat and compact, 5 to 6 inches high smothered with rich deep rose colored blooms, 2 inches across.	.10	.45		.75
●1004 Radiance (Silver Medal 1941). Hybrida type. A brilliant rich red or cerise, the throat is golden yellow where it starts to flare, which adds warmth and life to the general color. A very early and profuse bloomer. Flowers 2½ to 3 inches across.	.25			
1006 Elk's Pride. Largest, darkest and best velvety purple.	.15			
●1008 Violet Gem (Honorable Mention 1941). A true miniature in every respect. Plants are neat, dwarf and compact. The rich violet blue blooms are so plentiful they all but cover the clean dark green foliage. An outstanding addition to this group of Petunias.	.25			
1010 Twinkles. Brilliant rose with white star. Charming effect in beds and borders.	.15	.40	.50	.85
1012 Blue Bird. Deep violet blue, good size flower, fine bedder.	.15		.60	1.00
1014 General Dodds. Rich velvety dark red	.10	.25	.35	.60
1016 Howard's Star. Bluish-pink star on maroon ground.	.10	.30	.40	.70
1018 Rosy Morn. Lovely rose with white throat.	.10	.40	.50	.85
1020 Rose of Heaven. Beautiful rose pink. Very dwarf.	.10	.30	.40	.70
1022 Finest Mixed. Excellent range of bright colors.	.10	.25	.35	.60
BALCONY PETUNIAS. For window or porch boxes, vases, etc. }				
1030 White	1034 Blue	1038 Star of California	.15 ea.	.45 .75 1.25
1032 Rose	1036 Crimson	1040 Mixed		
PHLOX (Hardy) (Perennial)				
1050 Decussata (2 to 3 feet). No perennial bed is complete without some of these flowers.	.10		.50	
PHLOX DRUMMONDI (Annual Rockery)				
1052 Grandiflora. Fine Mixed. 12 inches. Choice strain with fine range of colors.	.10		.25	.40
1054 Dwarf Large Flowering Mixed Art Shades. 9 inches. Of dwarf compact habit, forming masses of striking color.	.10		.40	.70
1056 Starred and Fringed. Dwarf pretty star-shaped flowers.	.10		.30	.50
POPPIES (Annual and Perennial)				
Single Annual Varieties				
1064 Giant Shirley Mixed. Delicate shades of pale pink, rose, carmine, crimson and blue.	.10		.20	.40
1066 Tulip Poppy (Glaucum). Vivid scarlet Improved strain of the wild Flanders Poppy.	.10		.25	.45
1068 American Legion. Dazzling orange-scarlet. Enormous size.	.10		.25	.45
Double Annual Varieties				
1070 Carnation Flowered. Large double fringed flowers in brilliant colors.	.10		.15	.30
1072 Peony Flowered. Large showy flowers resembling a double peony, mixed colors.	.10		.15	.30
1074 Special Mixture. Double varieties in a gorgeous range of colors.	.10		.30	.45
Hardy Perennial Varieties				
1080 Iceland (Nudicule) (Sunbeam Mixture) (1 foot). Plant is of neat graceful habit forming tufts of fern-like leaves. Flowers are cup-shaped produced in a profusion of colors.	.10		$\frac{1}{8}$ oz.	$\frac{1}{4}$ oz.
1082 Sanford's Giants Mixed. Immense flowers on long stems; beautiful range of colors.	.10		.60	1.00

POPPIES (Continued)			$\frac{1}{16}$	$\frac{1}{8}$	$\frac{1}{4}$
		Pkt.	Oz.	Oz.	Oz.
●1084	Yellow Wonder (Special Mention 1937). Rich lemon colored cup-shaped flowers with broad round petals. Large flowered and vigorous grower.	.15		.60	1.00
1090	Orientele. True Oriental Poppy. 3 feet. Immense dark scarlet flowers.	.10		.25	.40
1092	Oriental Hybrids Mixed. All colors including rose, lilac, mauve shades.	.10		.25	.40
1094	Princess Victoria. Rich salmon pink, very striking.	.10	.35	.60	
PHYSALIS (Chinese Lantern Plant) (Perennial)					
1100	Francheti (1½ feet). Produces bright orange-scarlet lantern-like fruits.	.10		.20	.35
PHYSOSTEGIA (False Dragon Head) (Perennial)					
1104	Virginica. (3 feet). Bears freely delicate lavender-pink tubular flowers.	.10		.40	.70
PINKS (See Dianthus)					
PLATYCODON (Chinese Bell Flower) (Perennial)					
1108	Grandiflora. (2 to 3 feet). A handsome plant of the Campanula family. The buds look like small balloons opening into bell-shaped blooms of beautiful deep blue.	.15	.45	.75	
PORTULACA (Rose Moss) (Annual Rockery)					
1112	Single Mixed. (6 inches). Thrives in poor soil, likes dry sunny location. The glossy cup-shaped flowers cover the plant all summer with a mass of dazzling color.	.10			.25
1114	Double Mixed. Dainty little flowers like small roses, in bright colors.	.10		.50	.85
PRIMULA (Primrose) (Annual and Perennial)					
1120	Malacoides (Baby Primrose). Beautiful house plant with delicate lilac flowers.	.15			
1122	Vulgaris (English Primrose). Large canary yellow, sweet scented. Good rock plant.	.15			
1124	Cashmiriana (Perennial). Large globular heads of deep lilac. Prefers moist location.	.15			
1126	Cortusoides. (Perennial) (10 inches). A distinct Siberian species with deep rose flowers.	.15			
1128	Veris (Polyanthus) (Giant Munstead Strain) (Perennial Rockery). Flowers of largest size in all shades of yellow, cream, orange, pink, dark rose and white.	.15	.40	.75	
1130	Veris Acaulis Hybrids Mixed. Contains shades of lilac, purple, violet, buff, orange, salmon and rich red. Vigorous grower.	.10			
PRIMULA (Officinalis) (See Cowslip)					
EVENING PRIMROSE (See Oenothera)					
PYRETHRUM (Painted Daisy) (Perennial). Large single, double and semi-double daisy-like flowers in shades of rose, pink, crimson, etc. An excellent cut flower.					
1140	Double Mixed. (1 to 2 feet). A fine mixture. A percentage will be semi-double.	.15	.50	.85	
1142	Single Mixed. (1 to 2 feet). All colors mixed.	.10		.40	
RICINUS (Castor Bean) (Annual)					
1146	Zanzibarensis. Leaves often 2 feet across, ranging from brilliant green to bronze.	.10			.25
1148	Mixed. All Varieties.	.10			.20
RUDBECKIA (Coneflower) (Perennial)					
1152	Newmanni (2 feet). Large daisy-like flowers of orange-yellow with black cone-shaped center.	.10	$\frac{1}{16}$	$\frac{1}{8}$	$\frac{1}{4}$
1154	Purpurea (Purple Coneflower). 2 to 3 feet. Large reddish-purple flowers with dark brown cone-shaped center.	.10		.35	.60
SALPIGLOSSIS (Painted Tongue) (Annual)					
1160	Finest Mixed (2 feet). A mixture of gorgeous colors, many gold-veined. Blooms all summer.	.10		.25	.40
SALVIA (Scarlet Sage) (Annual)					
1164	Zurich. A dwarf free blooming variety, splendid bedder.	.10		.65	1.15
1166	Splendens. 3 feet. Bright scarlet flowers.	.10		.40	.70
1168	Bonfire. (18 inches). Compact bushy plants, erect spikes of brilliant scarlet.	.10		.50	.85
1174	Farinacea (Blue Sage) (2 feet). Perennial. Fine blue flowers on long stems.	.15		.50	.85

	Pkt.	$\frac{1}{16}$ Oz.	$\frac{1}{8}$ Oz.	$\frac{1}{4}$ Oz.
SANVITALIA (Trailing Zinnia) (Annual)				
1178 Procumbens. Fl. Pl. Dwarf, spreading habit. Plants covered with small golden-yellow flowers like tiny zinnias. Blooms all summer.	.10		.25	.50
SAPONARIA (Rock Soapwort) (Perennial Rockery)				
1182 Ocymoides (9 inches). Dwarf trailing plant producing a sheet of rose-colored flowers.	.10		.25	.35
SAXIFRAGA (Rockfoil) (Perennial Rockery)				
1186 Megasea (Cordifolia) (12 inches). Forms masses of dark green foliage. Rose colored flowers.	.15	1.00		
1188 Decipiens (Crimson Moss). 4 inches. Dwarf mossy plants bearing white flowers.	.15	1.00		
SCABIOSA (Mourning Bride) (Pin Cushion Flower) Annual				
1190 Double Large Flowering. 2 to 2½ feet. Makes an attractive cut flower. Soft tones predominate in this mixture.	.10			.25
1192 Caucasica (Blue Bonnet) (Perennial). 3 feet. Large lilac blooms. Splendid cut flowers.	.10		.60	1.00
1194 Giant Hybrids (Isaac House Strain). 3 feet. Fringed and ruffled. Shades of blue from lavender to dark blue. Very large flowers.	.15		.85	
1196 Columbaria Anthemifolia. 2 feet. Bears large pink and lavender flowers.	.15		.60	1.00
SCHIZANTHUS (Butterfly Flower)				
1200 Beautiful bushy plants with finely cut foliage, a mass of butterfly-like flowers in many shapes and shades. Blooms all summer.	.10		.25	.40
SILENE (Catchfly) (Perennial Rockery)				
1206 Shafta (4 to 6 inches). Closely allied to the family of pinks. Bright pink flowers.	.10			
1208 Armeria (Sweet William Catchfly). Forms heads of rose colored flowers.	.10			
STATICE (Sea Lavender) (Annual)				
1212 Sinuata Fine Mixed (3 feet). Blue, lavender, rose, white, yellow.	.10			.20
1214 Suworowi (Russian Rat Tail) (3 feet). Long slender rose color spikes.	.10			.35
1216 Latifolia (Perennial) (18 inches). Immense candelabra-like heads. Purplish blue.	.10		.35	.60
STOCKS (Gilliflower) (Annual)				
1220 Giant Perfection (Cut and Come Again) (20 inches). Fine free flowering type. Wonderful range of colors. Delightful fragrance.	.10		.50	.85
1222 Mammoth Early Branching (Nice) 18 inches. Forms pyramidal plants. Early bloomer.	.10		.50	.85
SUPER GIANT IMPERIAL				
1224 Rose Charm. Full base branching. Beautiful rich deep rose.	.10			
1226 Rose Light. Rose pink.	.10			
DOUBLE GIANT EXCELSIOR				
1228 Deep Rose. Brilliant rose. Improved column type. Non-branching.	.15			
1230 Rose. Rose pink.	.15			
STOKESIA (Cornflower Aster) Perennial				
1240 Cyanea (18 inches). Bears freely handsome flowers of rich blue. Resemble a large Centaurea or Cornflower.	.10		.40	.70
SUN FLOWER (Helianthus)				
1246 Chrysanthemum Flowered. Double, 6 feet. Rich golden yellow double flowers.	.10			Oz. .40
1248 Red Sunflower. 4 to 8 feet. Flowers vary from rich chestnut red to red tipped and bordered with yellow.	.10			$\frac{1}{4}$ Oz. .25
1250 Miniature (Cucumerifolius) 3½ feet. Small flowers of rich golden yellow with brown-black centers.	.10			.25
SWEET PEAS GIANT ORCHID FLOWERED SPENCERS				
This race of Sweet Peas bears exceptionally large flowers with beautifully waved petals and usually have four blossoms on long stems making them very desirable for cutting.				
1260 Gleneagles. Beautiful Light Blue				1276 International. Deep rosy mauve
1262 Damask Rose. Rose Carmine				1278 Pirate Gold. Golden orange
1264 Flamingo. Orange shaded cerise				1280 Youth. White edged soft rose
1266 What Joy. Deep cream				1282 Pinkie. Pure rose
1268 Red Boy. Very best crimson				1284 Olympia. Deep red purple
1270 Ivory Picture. Ivory flushed pink				1286 Smiles. Clear Glistening salmon
1272 Powerscourt. Clear lavender				1288 Welcome. Brilliant scarlet
1274 Warrior. Rich reddish maroon				1290 Avalanch. Glistening white
Any of above Packets 10c each, 3 for 25c; oz. 25c; $\frac{1}{4}$ lb. 75c				
Collection Packet each, 16 varieties \$1.25				

EARLY FLOWERING ORCHID FLOWERING SPENCERS

Valuable for Florists for greenhouse culture, may also be grown outdoors, thus giving a longer blooming season, as they bloom 3 to 4 weeks earlier than summer flowering sorts.

- | | |
|--|--------------------------------------|
| 1300 Shirley Temple. Rose pink, frilled and fluted | 1312 Mrs. H. Hoover. Bright blue |
| 1302 Exposition Pink. Gorgeous pink | 1314 Hope. Pure white |
| 1304 Balls Rose. Rose pink | 1316 Valencia. Sun proof orange |
| 1306 Majestic Rose. Brilliant rose | 1318 Lady Gay. Beautiful shrimp pink |
| 1308 Lavanda. Pure clear lavender | 1320 Red Bird. Bright Crimson |
| 1310 Blue Bonnet. Fine clear blue | 1322 Glitters Cerise |
- Any of above Packets 15c each; 3 for 35; oz. 35; ¼ lb. \$1.25
Collection Packet, each 12 varieties, \$1.25

1330 LEATHERMAN'S SUPERB MIXED ORCHID FLOWERED SPENCERS

This superb mixture is made up of only the best and brightest varieties including all desirable novelties of recent introduction; also some of the early blooming sorts, thus giving a wonderful display of gorgeous color over a long flowering period.

Packet 10c; oz. 20c; ¼ lb. 60c; lb. \$1.75

HARDY SWEET PEAS (See Lathyrus)

	Pkt.	Oz.	Oz.	Oz.
		1/16	1/8	1/4
SWEET WILLIAM (<i>Dianthus Barbatus</i>) (Biennial)				
1340 Pink Beauty (Improved). Fine salmon pink.	.10		.25	.40
1342 Purple Beauty. Bright deep purple.	.10		.45	.75
1344 Scarlet Beauty. Rich deep scarlet.	.10		.25	.40
1346 Giant Double Mixed. Strikingly brilliant colors.	.10		.35	.50

SWEET ROCKET (See Hesperis)

SWEET SULTAN (See Centaurea Imperialis)

SWEET WIVELSFIELD (See Dianthus)

TORENIA (Wishbone Flower) (Annual)

1354 Fournieri (10 inches) Bushy globular plants covered with sky blue flowers.	.10	.35	.60
---	-----	-----	-----

TRITOMA (Red Hot Poker) (Perennial)

1360 Early Hybrids. Showy border plant bearing heads of rich orange-scarlet. 3 to 4 feet.	.10		.35	.60
---	-----	--	-----	-----

TROLLIUS (Globe Flower) (Perennial)

1364 Orange Globe. (1 to 2 feet). Giant blooms of rich orange yellow. Fine cut flowers.	.15			
1366 Fine Mixed. All shades of yellow from light to dark.	.10			

TUNICA (Coat Flower) (Perennial Rockery)

1370 Saxifraga. Pretty tufted plant bearing bright pink flowers all season.	.10			.30
---	-----	--	--	-----

VERBENA (Annual)

●1380 Lavender Glory. (Award of Merit 1933). A true lavender with creamy white eye. Individual florets will cover a fifty-cent piece.	.15		.50	.75
●1382 Beauty of Oxford Hybrids (Award of Merit 1933). A beautiful giant flower of exquisite color with shades of clear rose pink to rose red. The brightest Rose Verbena ever introduced from seed.	.15		.50	.75

MAMMOTH FLOWERING. Florets 1 to ¼ inches across.

1384 Rose Pink	1390 Flame Pink
1386 Deep Violet	1392 White
1388 Spectrum Red	1394 Blue White Eye

Pkts. 10c each; ¼ oz. 35c; ¼ oz. 65c

Collection one packet each of above 6 colors for 50c

1396 Holco Giants. Mixed, all colors	.10	.40	.70
1398 Lemon Verbena (<i>Citriodora</i>). Lemon scented leaves.	.10		

VERONICA (Speedwell) (Perennial)

1406 Spicata. Hardy herbaceous plants, 12 to 18 inches. Long spikes of navy blue.	.10	.35	.60
---	-----	-----	-----

VIOLA CORNUTA (Tufted Pansy)

	Pkt.	$\frac{1}{16}$ Oz.	$\frac{1}{8}$ Oz.	$\frac{1}{4}$ Oz.
These flowers are not as large as regular pansies. They bloom freely and like hot dry locations. Splendid rock garden plants with effective colors.				
1420 Chantryland. Pure Apricot.	.15		.50	.85
1422 Jersey Gem. Rich deep violet blue. By far the best of this color.	.20	2.00		
1424 Arkwright Ruby. Rich ruby crimson suffused mahogany.	.20	1.00		
1426 Lutea Splendens. Rich golden yellow.	.10		.50	.85
1428 Mixed. All varieties and colors.	.10		.35	.60

WALLFLOWER (Cheiranthus) (Half Hardy Biennial)

1434 Double Early Wonder Mixed. (18 inches). Rich tones of yellow, red and brown.	.10		.40	.70
---	-----	--	-----	-----

SIBERIAN WALLFLOWER (See Cheiranthus)**ZINNIA (Annual)**

A very much improved old fashioned flower with a wonderful range of color. Easy to grow and given a sunny location, fertile soil and well watered the flowers will be more completely double and colors intensified.

DAHLIA FLOWERED (Giant Double) (2 to 3 feet)

1440 Canary Bird. Canary yellow	1448 Polar Bear. Pure White
1442 Crimson Monarch. Crimson scarlet	1450 Old Rose. Beautiful shade of old rose
1444 Exquisite. Rich rose pink	1452 Dream. Deep lavender
1446 Oriole. Orange and Gold.	1454 Golden State. Orange yellow

1456 Mixed. All colors

Packets 10c each; $\frac{1}{8}$ oz. 35c; $\frac{1}{4}$ oz. 55c

Collection, one Packet each of 8 colors, 70c

DOUBLE CALIFORNIA GIANTS (3 feet)

1460 Golden Yellow	1466 Soft Pink
1462 Orange Scarlet	1468 Violet
1464 White	1470 Deep Scarlet

1472 Mixed. All colors

Packets 10c each; $\frac{1}{8}$ oz. 30c; $\frac{1}{4}$ oz. 50c

Collection One Packet each of 6 colors, 50c

●1476 Fantasy (Award of Merit 1935). (2 to 2½ feet). Flowers are composed of a mass of shaggy ray-like petals. Colors include bright reds, orange and pastel pinks and cream.	.10	.25	.40
●1478 Star Dust (Fantasy) (Award of Merit 1937). First separate color of the Fantasy type.	.10	.35	.60

LILLIPUT IMPROVED (Double Pompon). Handsome little bushes 15 inches high, and are covered with small fully double flowers. Bloom all summer. Colors, white, flesh, rose, salmon, crimson, yellow, purple.

Separate colors, packets 10c each; $\frac{1}{8}$ oz. 20c; $\frac{1}{4}$ oz. 35c

Collection One Packet each, 7 colors for 55c

1480 Mixed. All colors.	oz. \$1.00	.10		.30
●1482 Lilliput Black Ruby (Bronze Medal 1941). Deep velvety maroon, a new color in Zinnias. Flowers 1¼ inches across, borne on long stems. Erect bushes 2 feet high.		.25		
1484 Mexican Zinnia Haagaena. Double miniature Zinnias of bright golden yellow.		.10	.25	.45
1486 Scabious Flowered. Flowers resemble Scabiosas. Plants 2 to 2½ feet high.		.10	.30	.50
1488 Zinnia Linearis. Flowers are single, of a lovely shade of golden orange with a delicate lemon yellow stripe through each petal. Very free blooming.		.10	.45	.75
1492 Red Riding Hood. (12 inches). Profuse bloomer. The double scarlet flowers are 1 inch across.		.10		.30
1494 Howard's New Giant Crested. The blossoms average 4 to 5 inches in diameter with a full rounded cushiony center surrounded by broad guard petals. Almost all known colors and shades to be found in Zinnias make up this mixture.		.25	.45	.75 1.25

INSECTICIDES and FUNGICIDES

All prices are F. O. B. CANTON, OHIO, and subject to Change Without Notice
For Parcel Post Rates See Page 8

- Acme Scientific Rose Spray.** Gives complete protection to roses and many other flowers. 12 qt. size 95c, 24 qt. size \$1.50.
- Acme Red River Potato-Mix.** A complete spray. Kills potato bugs, controls blight, leaf hopper, and flea beetle. 4 lb. bag 80c.
- Antrol.** For the control of Ants inside or outside the house. 4 filled feeders 40c.
- Arsenate of Lead.** (Powder). 1 to 2 lbs. to 50 gals. water. Lb. 35c, 4 lbs. 75c.
- Black Flag Insect Spray.** For flies, roaches, bed-bugs. 6 oz. 10c, pt. 25c.
- Blue Vitriol.** (Copper Sulphate). Lb. 10c, 10 lbs. 85c.
- "Black Leaf 40."** Destroys Aphis, and Lice on poultry roosts. 1 oz. 35c, 5 ozs. \$1.00.
- Bordeaux Mixture.** (Powdered). For blight and fungus diseases on potatoes and grapes. Lb. 35c, 4 lbs. 65c.
- Calcium Arsenate.** Controls potato beetle. Lb. 25c, 4 lbs. 60c.
- Carbon Disulphide.** Lb. 50c, 5 lbs. \$2.00.
- Ceresan.** Seed treatment for Wheat, Oats, Barley, etc. 4 ozs. 30c, lb. 75c, 5 lbs. \$3.25.
- Clintark.** Renews the life of wounded and decayed trees. Easy to apply. Lb. 50c.
- Cuprocide.** Prevents damping off. 4 ozs. 35c, lb. 90c, 5 lbs. \$4.00.
- Cyanogas.** (Calcium Cyanide). For destroying moles, rats, etc. Can with spout for ants 35c, ½ lb. 45c, lb. 75c, 5 lbs. \$3.00.
- Dogzoff.** Keeps dogs away. Price 60c.
- Dutox.** A non-arsenical material for the control of Beetles and Leaf Eating Insects. May be sprayed or dusted. 1 lb. 35c, 6 lbs. \$1.20.
- Ethylene Dichloride.** This emulsion for the control of Peach Tree Borer can be applied any time during the fall or spring. Quart can \$1.00.
- Evergreen.** A non-poisonous pyrethrum insecticide that destroys many chewing and sucking insects. 1 oz. 35c, 6 ozs. \$1.00.
- Fish Oil Soap.** Combats Aphids. ½ pt. 35c.
- Formaldehyde.** Seed treatment for smuts on wheat, barley and oats. Lb. 35c, 10 lbs. \$3.25.
- Goulac Spreader.** Used as an emulsifying agent in making up home-made Dormant Oil Spray Mixtures. Lb. 10c.
- Grafting Wax.** ¼ lb. 20c, ½ lb. 35c, lb. 60c.
- Lime Sulphur.** (Dry Powdered). Instantly soluble in cold or hot water 1 lb. to 6 gals. water. Lb. 25c, 12½ lb. bag \$1.65.
- Mologen.** Eliminates moles from the lawn in 2 or 3 days. ½ lb. can, 50c.
- Monohydrated Copper Sulphate.** For dusting mix 12½ lbs. with 50 lbs. Hydrated Lime. 12½ lb. bag \$1.75, 100 lbs. \$13.00.
- Napthalene Flakes.** For the control of Thrips in storing and growing Gladiolus. Lb. 20c.
- Para-Dichlorobenzene.** For peach borer. Use Aug. and Sept. Lb. 40c, 5 lbs. \$1.75.
- Paris Green.** Often used in preparing poison bait for cut worms, grasshoppers, etc. ¼ lb. 25c, ½ lb. 40c, lb. 60c.
- Red Arrow.** A non-poisonous, highly concentrated pyrethrum extract containing soap. Oz. 35c, 4 ozs. \$1.00.
- Rootone.** A synthetic plant hormone powder which roots cuttings, kills fungi, stops damping off, stimulates seeds and bulbs. Pkt. 25c, 2 oz. jar \$1.00.
- Rotenone Dust.** A most efficient and economical control of all sucking and chewing insects. 4 lbs. 50c.
- Sa-Va-Tree.** Pruning Paint. Forms a protective coating which will remain pliable and elastic year after year. Qt. 60c, gal. \$1.75. 5 gal. \$1.70 per gal.
- Semesan.** Seed treatment for Flowers, Vegetables, and Bulbs. 1-3 oz. 10c, 2 ozs. 35c, lb. \$2.25.
- Semesan Jr.** Seed treatment for Field and Sweet Corn. 2 ozs. 15c, 4 ozs. 30c, lb. 75c.
- Semesan Bel.** For treating seed Irish and Sweet Potatoes. 2 oz. 25c, 4 ozs. 50c, lb. \$4.00.
- Slug Shot.** With Rotenone. Non-poisonous. For cabbage and currant worms, rose slugs and all soft-bodied insects. Lb. 25c, 5 lbs. \$1.00.
- Snarol.** An effective bait for controlling cutworms, grasshoppers, snails, slugs and sowbugs. 1½ lb. pkg. 35c.
- Sodium Chlorate.** For exterminating weeds. Lb. 20c, 5 lbs. 85c, 10 lbs. \$1.50.
- Sulphur-Dusting.** 99.8% pure. Lb. 20c, 5 lbs. 75c, 10 lbs. \$1.25.
- Sulphur-Wettable.** Lb. 25c, 5 lbs. 85c, 10 lbs. \$1.50.
- Sunoco Spray Oil.** Controls aphid, psylla, red spider, scale, etc. Gal. \$1.25, 5 gals. \$5.00.
- Stop Vermin.** For root maggot, wire worm, grubs, ants, etc., below ground, also striped cucumber beetle, leaf-hopper, etc. Lb. 50c, 5 lbs. \$1.85, 10 lbs. \$3.25.
- Tobacco Dust.** (For Dusting). Lb. 10c, 5 lbs. 35c, 10 lbs. 65c, 25 lbs. \$1.50.
- Tree Tanglefoot.** Preparation for painting band around trees. 6 ozs. 35c, lb. 60c, 5 lbs. \$3.00.
- Triogen.**
A—Small kit makes 16 quarts. \$1.50
B—Medium kit makes 64 quarts. \$4.00
C—Large kit makes 32 gallons. \$6.00.
- Vitamin B-1.** Produces Reinvigorated Root Growth. ½ oz. bottle makes 120 gallons of watering solution. ½ oz. 35c.
- Volck-Garden.** Effective against red spider, aphid, mealy bugs and many other insects. 3½ ozs. 35c, pt. \$1.00.
- Volck-Nursery.** A most effective spray for red spider. ½ pt. 35c, qt. 75c, gal. \$2.00.

Letherman's Gladiolus

Our Bulbs have all been treated for Thrip.

Easy to grow and make ideal cut flowers. To have a succession of bloom plantings 10 days apart may be made. Plant 6 inches deep 6 to 8 inches apart, stake when needed. The carefully selected list below comprises a well balanced range of colors. Prices any variety, 5c each, 50c doz., \$3.50 per 100, postpaid. Half doz. at doz. rate, 50 at 100 rate.

Albatros. Pure white; flowers cone-shaped, much like a lily.

Bagdad. Smoky old rose, deeper toward edges and lighter in the throat.

Betty Nuthall. Light coral with pale orange throat and light carmine feathering, beautiful large variety.

Commander Koehl. Brilliant blood red. An outstanding variety with large flowers.

Debonair. LaFrance pink, cream throat, very tall.

Dr. C. Hoeg. Glossy, velvety maroon-red with a fine line of silvery gray around the edge of each petal.

Dr. F. E. Bennett. Fiery orange-scarlet; very showy.

Giant Nymph. LaFrance pink with creamy yellow throat.

Golden Dream. Pure golden yellow of splendid substance.

LaFiesta. Clear, bright orange with deeper throat markings. A very distinct and unusual Gladiolus.

Margaret Fulton. Beautiful clear rose salmon.

Minuet. A beautiful shade of lavender, very popular.

Mother Machree. Soft smoky lavender. Beautiful coloring of lavender, orange and subdued gray.

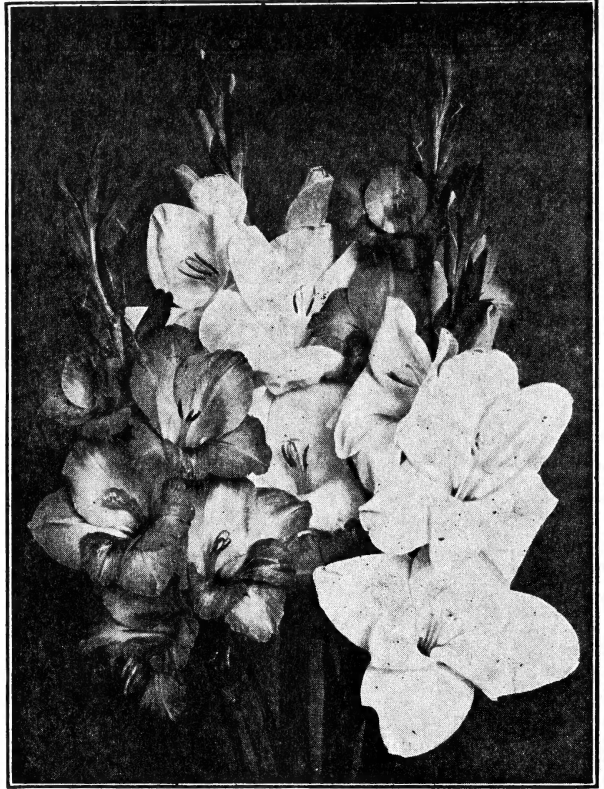
Pelagrina. Intense violet-blue. The richest and deepest blue Gladiolus.

Picardy. Soft apricot pink with deepest shade feathering in throat. Petals slightly frilled. Florets extremely large.

Red Phipps. Striking rich glowing red. Marvelous when well grown.

Shirley Temple. New. Cream with deeper throat. Large, ruffled 6 inch florets.

Wasaga. A good buff color with ruffled petals.



W. H. Phipps. LaFrance pink overlaid with light salmon rose.

Letherman's Extra Fine Mixture. A well balanced assortment of colors and types including many new varieties. All well developed bulbs that will make a brilliant display. 45c doz., \$3.00 per 100, postpaid.

Holco Rainbow Mixture. Good blooming size bulbs, desirable for mass planting. 30c doz., \$2.25 per 100, postpaid.

CANNAS

The President. (5 ft.) The best green-leaved red flowered Canna grown. The flowers are immense, round, firm. 15c each, 12 for \$1.50.

King Humbert. (4 ft.) The best bronze-leaved variety. Immense orchid flowered trusses of velvety orange-scarlet. 15c each, 12 for \$1.50.

King Midas. (4 ft.) Large flowers, compact heads, deep yellow, faintly dotted with pale red near the base of the petals. 15c each, 12 for \$1.50.

Letherman's, Inc.

404 Cleveland Ave., N. W.

Canton, Ohio